

THIS MAP WAS PREPARED FOR ASSESSMENT PURPOSE ONLY.

SW1/4 NE1/4 SEC.18 T.27S. R.5W. W.M. DOUGLAS COUNTY

REVISED ON
4-6-16

27 5 18AC ROSEBURG

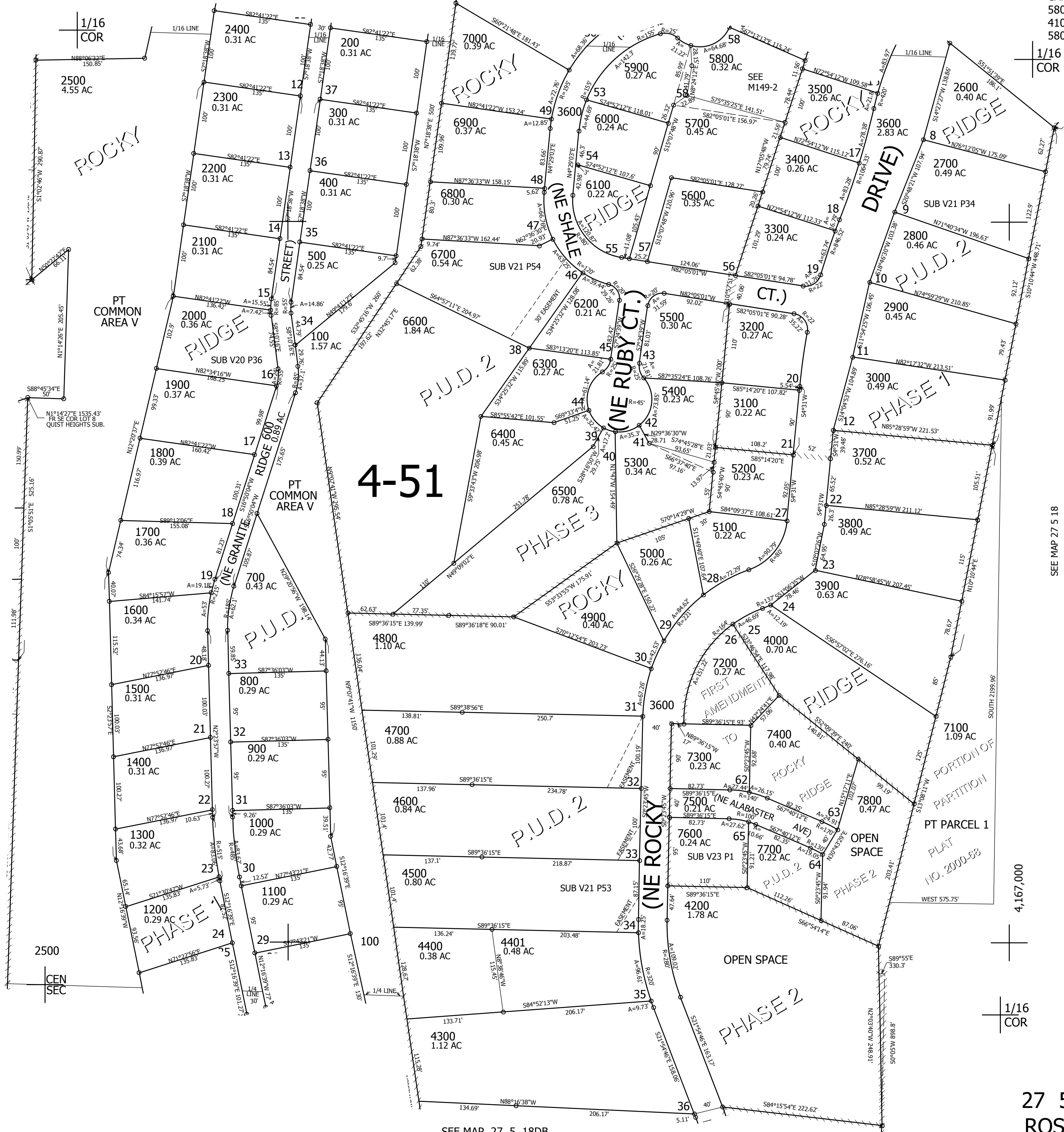
1" = 100'

SEE MAP 27 5 18AB

CANCELLED NO'S
5801 5401 4100
4101 4102 4103
5802

SEE MAP 27 5 18BD

SEE MAP 27 5 18



4-51

4,167,000

579,500

SEE MAP 27 5 18BD

27 5 18AC ROSEBURG