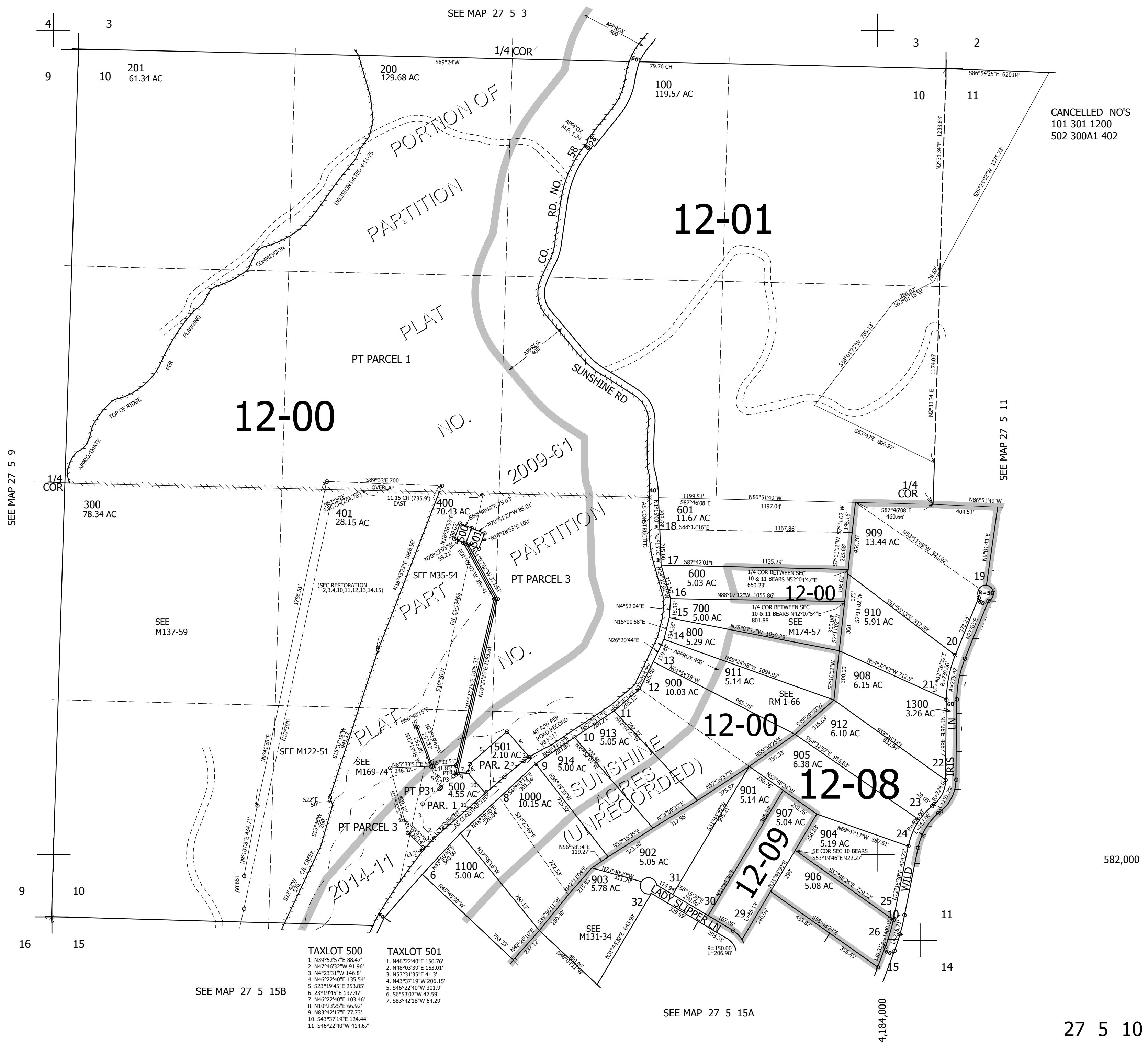


THIS MAP WAS PREPARED FOR
ASSESSMENT PURPOSE ONLY.

SEC.10 T.27S. R.5W. W.M.
DOUGLAS COUNTY
1" = 400'

REVISED ON
10-8-18



- TAXLOT 500**
1. N39°52'57"E 88.47'
 2. N47°46'32"W 91.96'
 3. N42°23'31"W 146.8'
 4. N46°22'40"E 135.54'
 5. S23°19'45"E 253.85'
 6. 23°19'45"E 137.47'
 7. N46°22'40"E 103.46'
 8. N10°23'25"E 66.92'
 9. N83°42'17"E 77.73'
 10. S43°37'19"E 124.44'
 11. S46°22'40"W 414.67'
- TAXLOT 501**
1. N46°22'40"E 150.76'
 2. N48°03'39"E 153.01'
 3. N53°31'35"E 41.3'
 4. N43°37'19"W 206.15'
 5. S46°22'40"W 301.9'
 6. S6°53'07"W 47.59'
 7. S83°42'18"W 64.29'

CANCELLED NO'S
101 301 1200
502 300A1 402

582,000