

THIS MAP WAS PREPARED FOR ASSESSMENT PURPOSE ONLY.

1/16 COR

SE1/4 SW1/4 SEC.7 T.27S. R.5W. W.M. DOUGLAS COUNTY 1" = 100'

REVISED ON 4-5-16

27 5 7CD ROSEBURG

1/16 COR

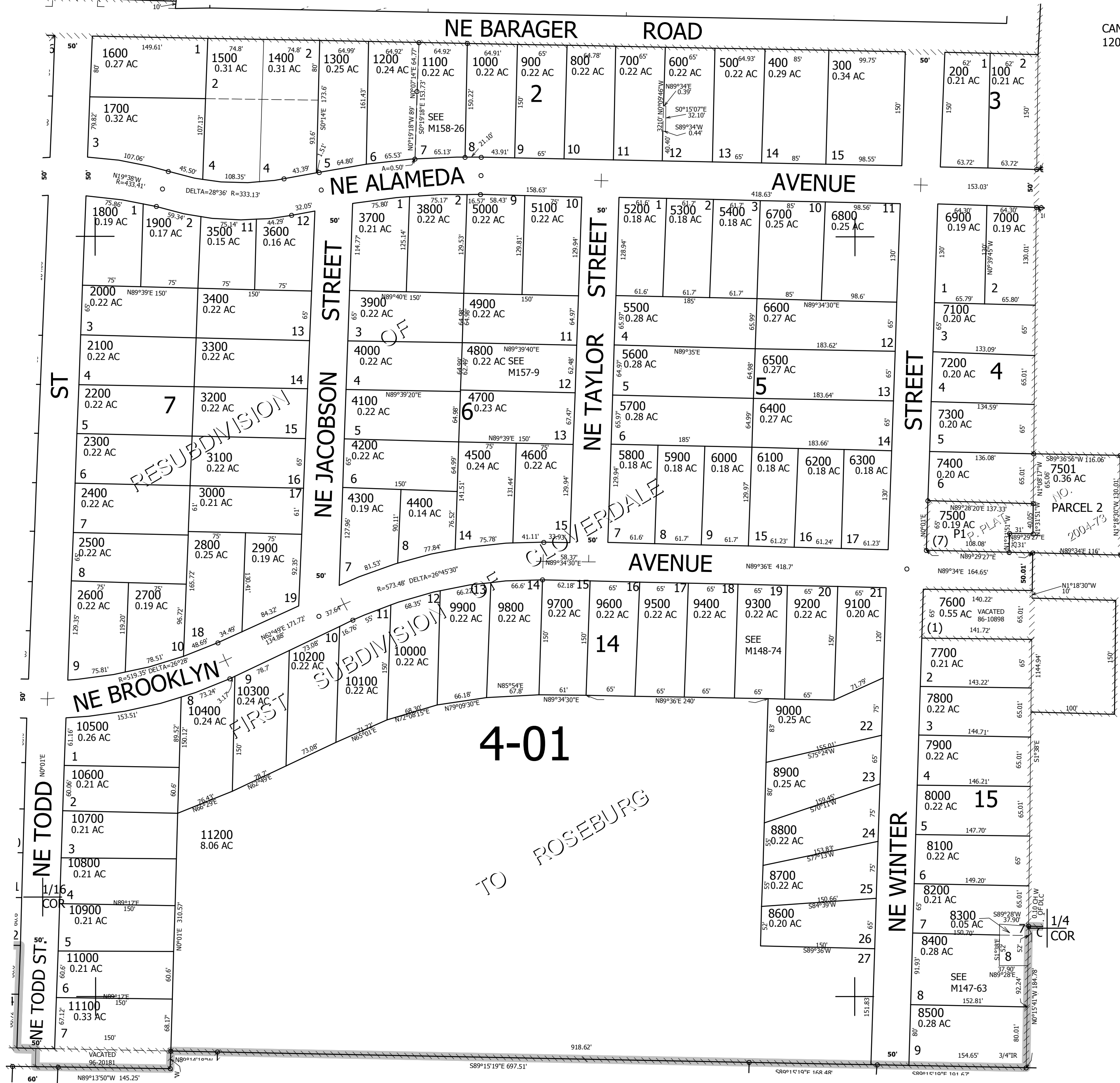
SEE MAP 27 5 7CB

SEE MAP 27 5 7

CANCELLED NO'S 1201

SEE MAP 27 5 7CC

SEE MAP 27 5 7



4-01

TO ROSEBURG

SEE MAP 27 5 18BA

4,165,500

27 5 7CD ROSEBURG

582,000