

THIS MAP WAS PREPARED FOR ASSESSMENT PURPOSE ONLY.

NW1/4 NW1/4 SEC.7 T.27S. R.5W. W.M. DOUGLAS COUNTY

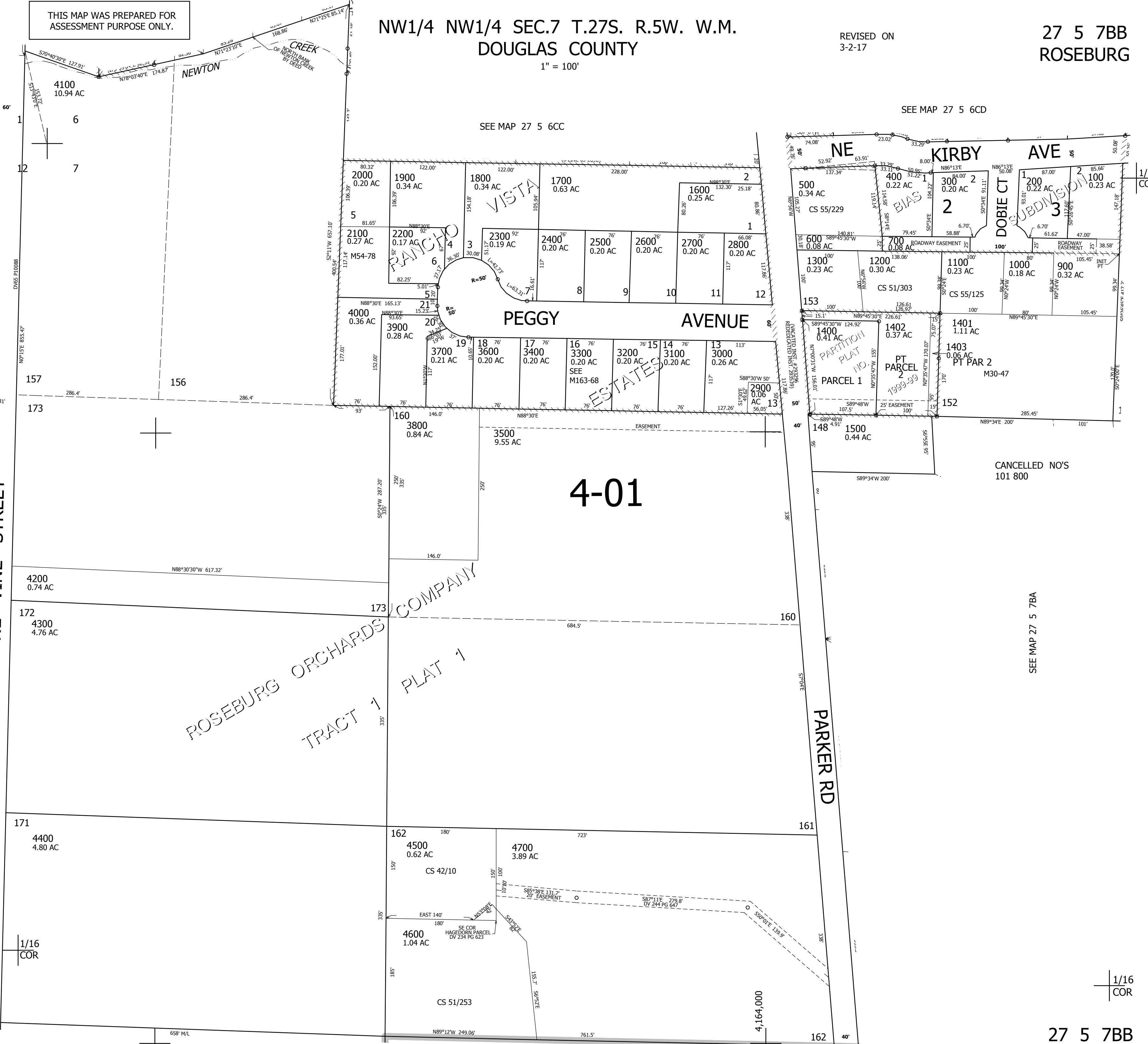
1" = 100'

REVISED ON
3-2-17

27 5 7BB ROSEBURG

SEE MAP 27 5 6CD

SEE MAP 27 5 6CC



SEE MAP 27 5 7BA

586,000

SEE MAP 27 5 7BC

27 5 7BB ROSEBURG

1/16
COR