

THIS MAP WAS PREPARED FOR ASSESSMENT PURPOSE ONLY.

SW1/4 SW1/4 SEC.6 T.27S. R.5W. W.M. DOUGLAS COUNTY

1" = 100'

REVISED ON 3-2-17

27 5 6CC ROSEBURG

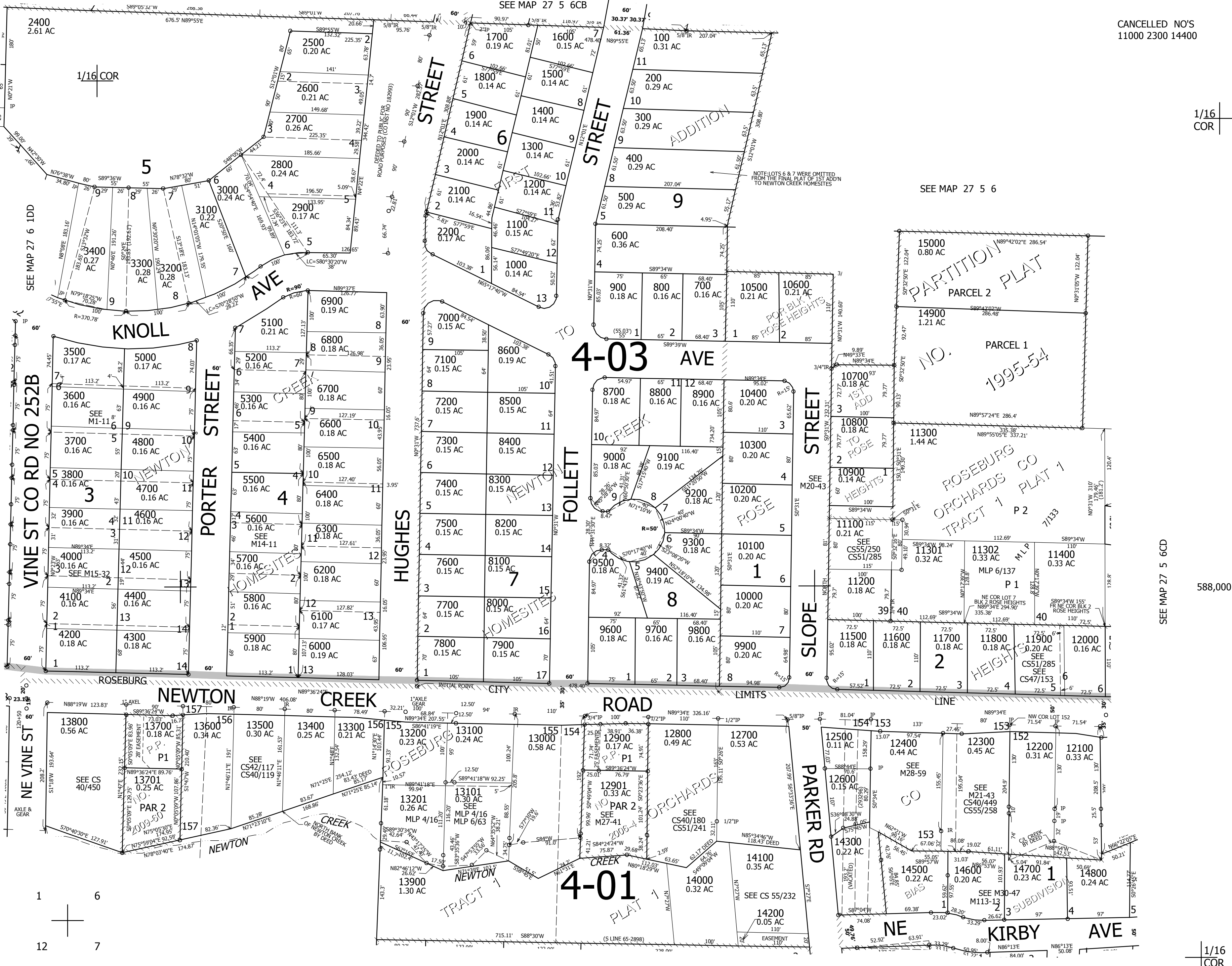
CANCELLED NO'S 11000 2300 14400

SEE MAP 27 6 1DA

SEE MAP 27 5 6CB

SEE MAP 27 5 6

1/16 COR



SEE MAP 27 5 6CD

588,000

SEE MAP 27 5 7BB

4,164,000

1/16 COR

27 5 6CC ROSEBURG