

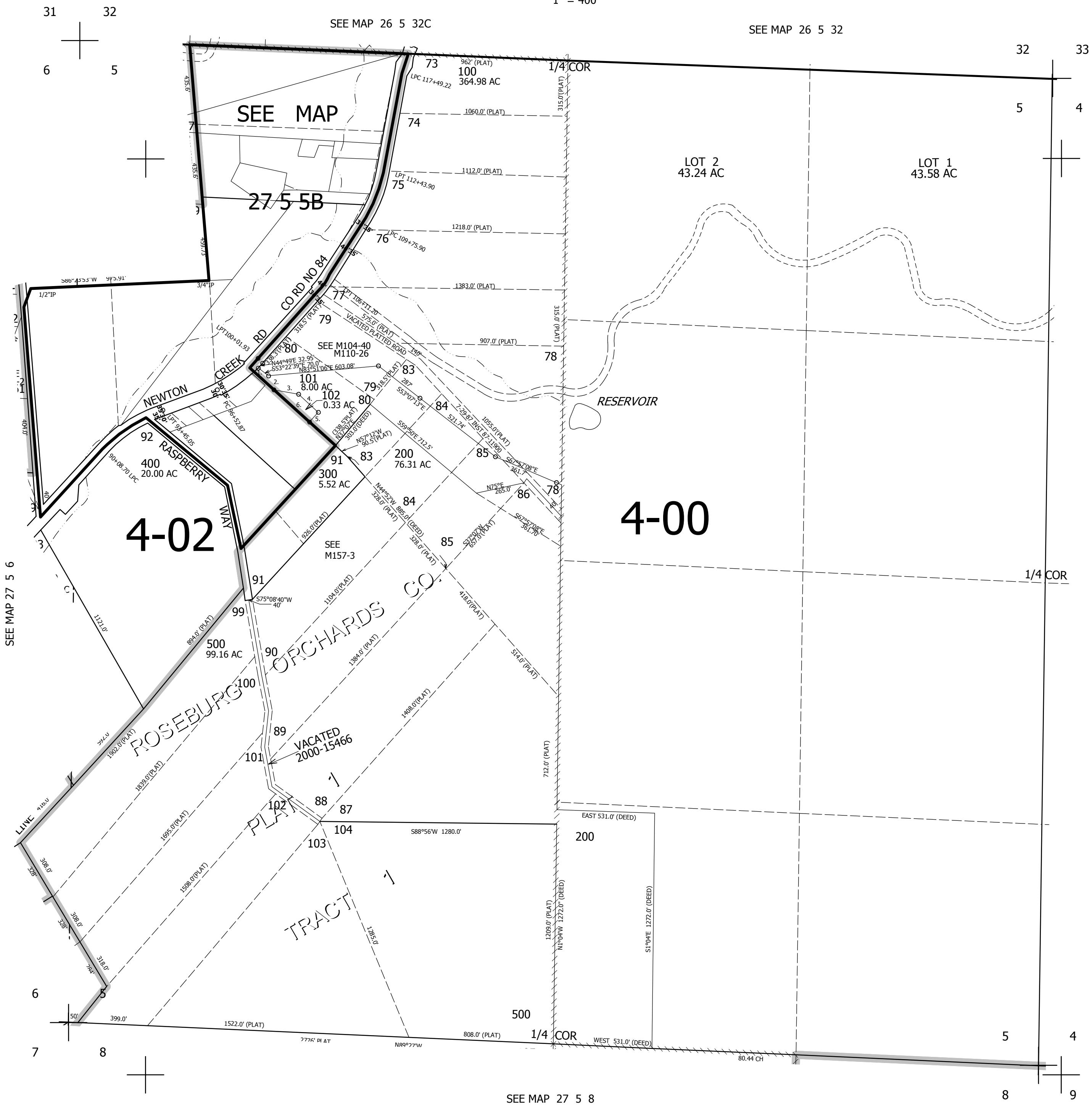
THIS MAP WAS PREPARED FOR ASSESSMENT PURPOSE ONLY.

SEC.5 T.27S. R.5W. W.M. DOUGLAS COUNTY

REVISED ON 10-12-16

27 5 5 & INDEX

1" = 400'



CANCELLED NO'S 201

- PARCEL 102
1. S44°49'W 40.56'
  2. S55°09'E 146.49'
  3. S86°56'30"E 136.62'
  4. S54°35'15"E 145.65'
  5. S34°51'W 70.54'
  6. N55°09'W 261.77'

SEE MAP 27 5 4

SEE MAP 27 5 6

SEE MAP 27 5 8

587,000

4,174,000

27 5 5 & INDEX