

THIS MAP WAS PREPARED FOR ASSESSMENT PURPOSE ONLY.

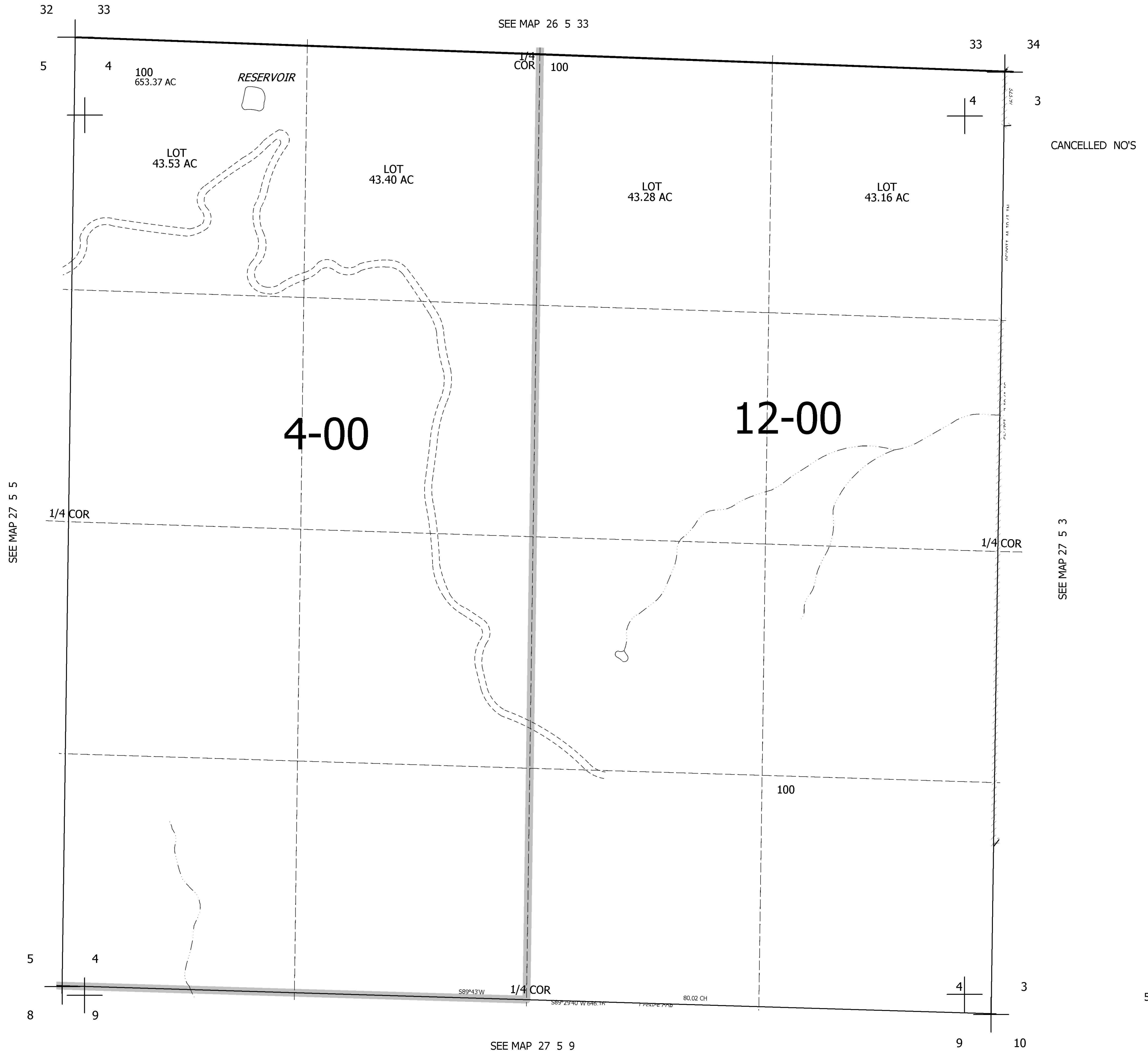
SEC.4 T.27S. R.5W. W.M.  
DOUGLAS COUNTY

REVISED ON

27 5 4

1" = 400'

SEE MAP 26 5 33



CANCELLED NO'S

SEE MAP 27 5 5

SEE MAP 27 5 3

SEE MAP 27 5 9

587,000

4,179,000

27 5 4