

THIS MAP WAS PREPARED FOR  
ASSESSMENT PURPOSE ONLY.

T.25 1/2S. R.1E. W.M.  
DOUGLAS COUNTY  
1" = 2000'

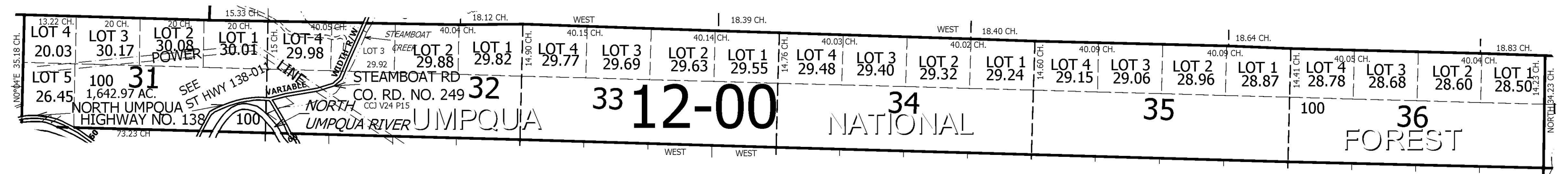
REVISED ON  
7-16-09

25V 1E 00

CANCELLED NO'S

SEE MAP 25 1E 00

SEE MAP 26 1 00



SEE MAP 25V 2E 00

SEE MAP 26 1E 00

25V 1E 00