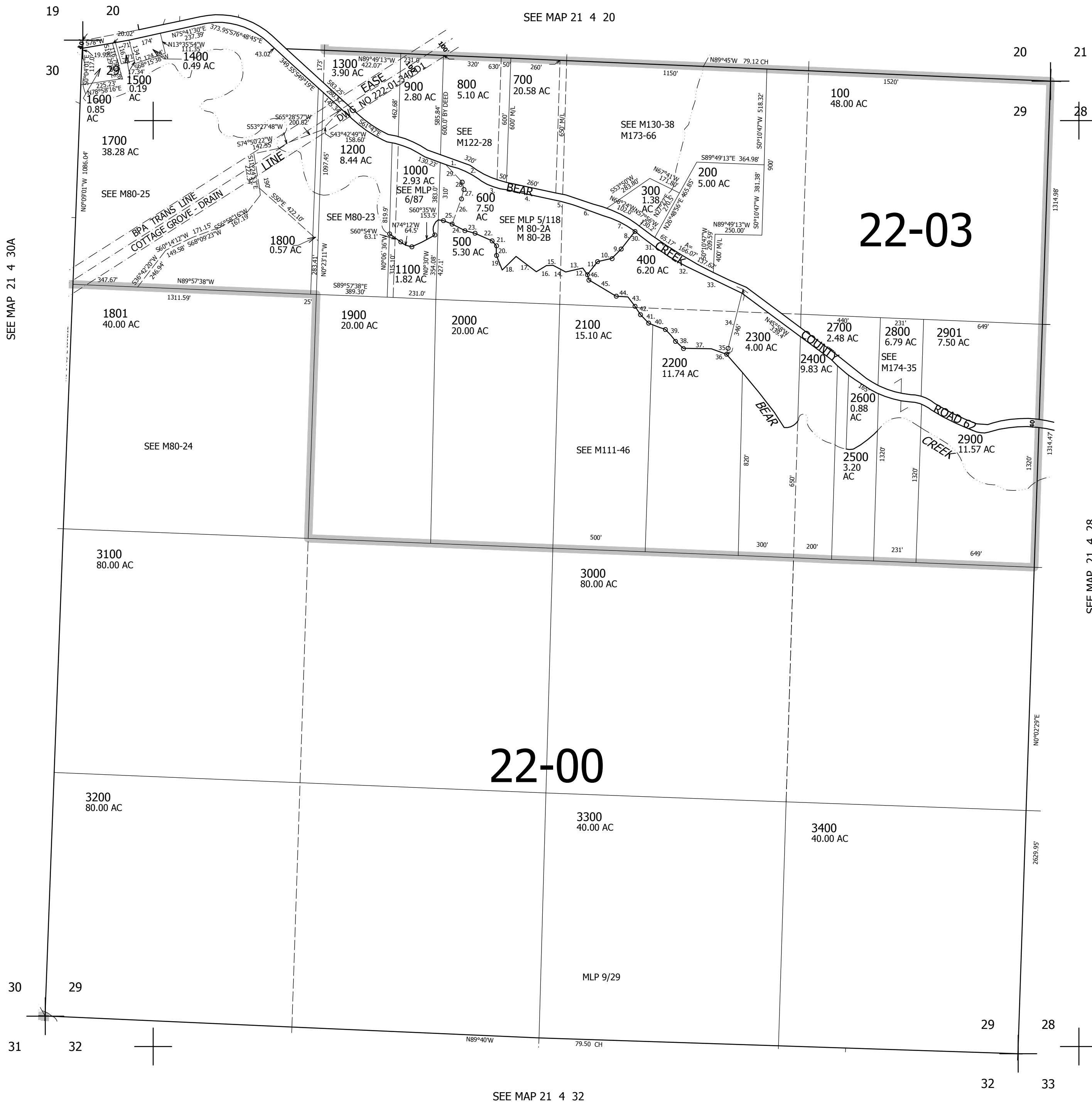


THIS MAP WAS PREPARED FOR ASSESSMENT PURPOSE ONLY.

SEC.29 T21S. R.4W. W.M.  
DOUGLAS COUNTY  
1" = 400'

REVISED ON  
8-9-13

21 4 29



CANCELLED NO'S  
201

1. S68°55'57"E 81.82'
2. S66°14'17"E 170.18'
3. S72°28'12"E 147.41'
4. S81°23'48"E 226.05'
5. S77°08'29"E 160.42'
6. S72°53'10"E 140.03'
7. S56°34'14"E 194.33'
8. S34°28'19"W 118.89'
9. S43°56'21"W 76.38'
10. S75°33'12"W 68.15'
11. S39°05'38"W 103.88'
12. N27°12'58"W 53.55'
13. S68°24'58"W 97.86'
14. N63°07'49"W 84.08'
15. S85°14'11"W 24.08'
16. S88°20'21"W 70.49'
17. N53°46'15"W 125.21'
18. S46°30'27"W 107.52'
19. N22°25'11"W 82.08'
20. N3°26'01"W 50.09'
21. N45°00'00"W 36.78'
22. N67°01'33"W 99.92'
23. N76°48'05"W 59.11'
24. N65°28'12"W 122.72'
25. N77°22'53"W 34.46'
26. S21°25'30"W 152.44'
27. S6°58'04"W 48.50'
28. S25°45'35"E 49.16'
29. S44°25'12"E 132.66'
30. S56°52'30"E 40.56'
31. S55°21'59"E 119.41'
32. S60°28'33"E 172.98'
33. S85°35'31"E 332.16'
34. S12°30'00"W 309.39'
35. S12°30'00"W 20.0'
36. N76°51'58"W 88.54'
37. S88°49'51"W 147.03'
38. N51°57'11"W 58.41'
39. N36°52'12"W 75.00'
40. N73°34'40"W 99.04'
41. N46°44'09"W 70.04'
42. N36°40'28"W 50.18'
43. N36°40'28"W 67.02'
44. S88°15'51"W 66.03'
45. N61°36'25"W 168.24'
46. N27°12'58"W 25.16'

SEE MAP 21 4 30A

SEE MAP 21 4 30

SEE MAP 21 4 20

22-00

22-03

SEE MAP 21 4 28

SEE MAP 21 4 32

755,000

4,211,000

21 4 29