

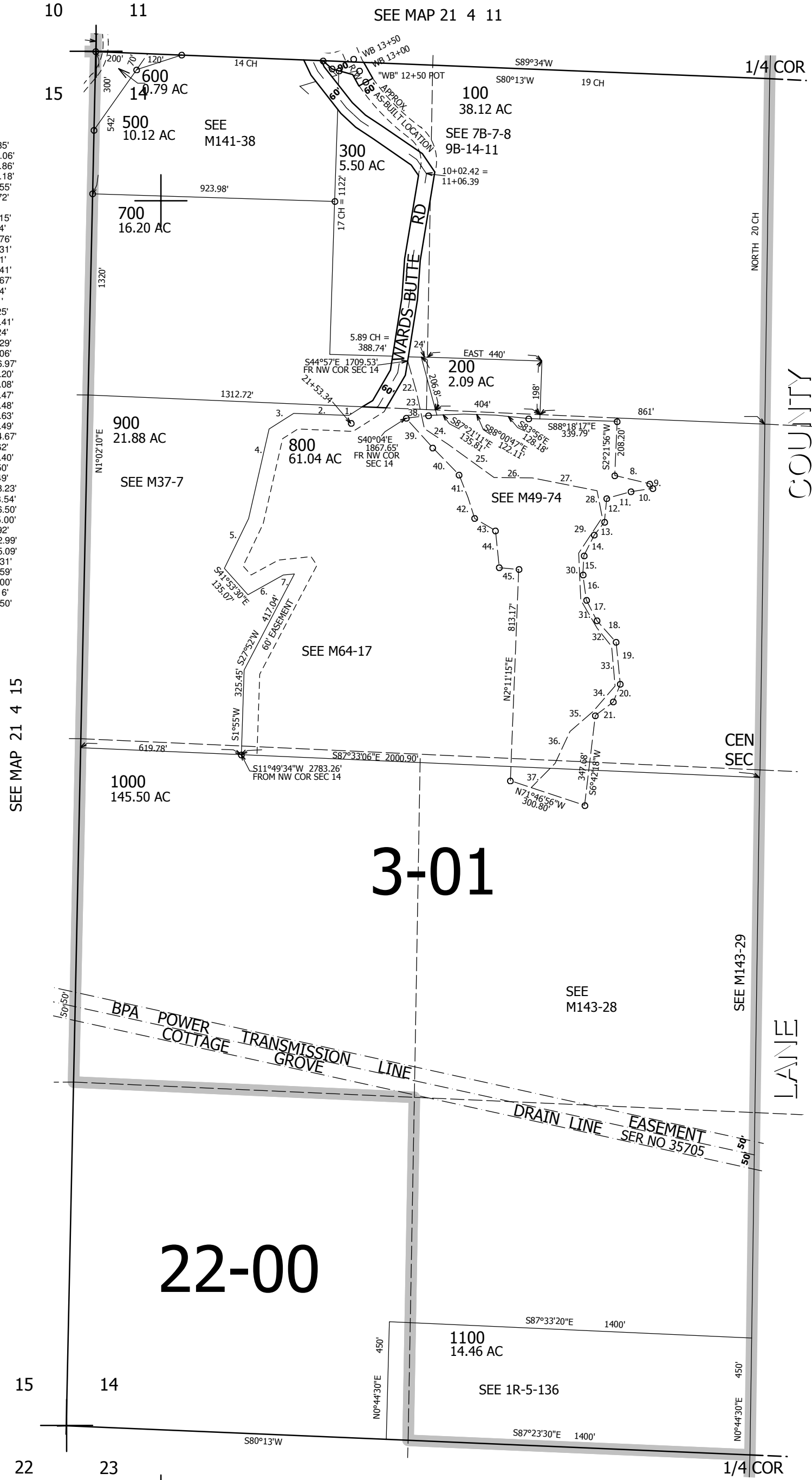
THIS MAP WAS PREPARED FOR ASSESSMENT PURPOSE ONLY.

SEC.14 T21S. R.4W. W.M. DOUGLAS COUNTY
1" = 400'

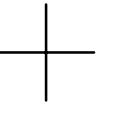
REVISED ON 4-18-17

21 4 14

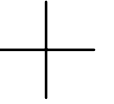
1. S57°44'30"W 52.35'
2. N87°48'00"W 211.06'
3. S57°42'00"W 112.86'
4. S12°45'00"W 353.18'
5. S25°37'30"W 213.55'
6. N60°55'30"E 155.72'
7. N84°10'00"E 43.7'
8. S76°53'30"E 138.15'
9. S32°22'25"E 21.14'
10. S81°35'28"W 84.76'
11. S74°20'44"W 96.31'
12. S5°06'33"W 91.91'
13. S38°55'09"W 63.41'
14. S25°57'38"W 88.67'
15. S3°12'12"W 73.44'
16. S8°01'27"E 98.21'
17. S27°08'03"E 88.25'
18. S41°47'14"E 111.41'
19. S5°45'14"E 162.24'
20. S21°27'04"W 72.29'
21. S52°36'27"W 87.06'
22. S16°09'37"W 116.97'
23. S12°21'43"E 150.20'
24. S56°24'33"E 109.08'
25. S54°21'34"E 218.47'
26. S89°18'45"E 146.48'
27. S79°02'06"E 254.63'
28. S16°56'51"E 104.49'
29. S33°09'53"W 164.67'
30. S2°53'13"E 180.62'
31. S30°09'59"E 124.40'
32. S38°24'35"E 90.50'
33. S5°09'31"E 152.49'
34. S40°29'33"W 128.23'
35. S49°03'58"W 118.54'
36. S25°01'42"W 136.50'
37. S44°29'56"W 135.00'
38. N83°24'30"E 86.92'
39. N41°51'41"W 152.99'
40. N44°27'52"W 145.09'
41. N22°00'45"W 94.31'
42. N17°26'20"W 83.59'
43. N59°22'11"W 93.00'
44. N5°57'42"W 143.16'
45. N85°16'11"W 75.50'



CANCELLED NO'S 500M1 400



765,000



4,227,000

21 4 14