

SECTION 5 T.31S. R.5W. W.M.
DOUGLAS COUNTY

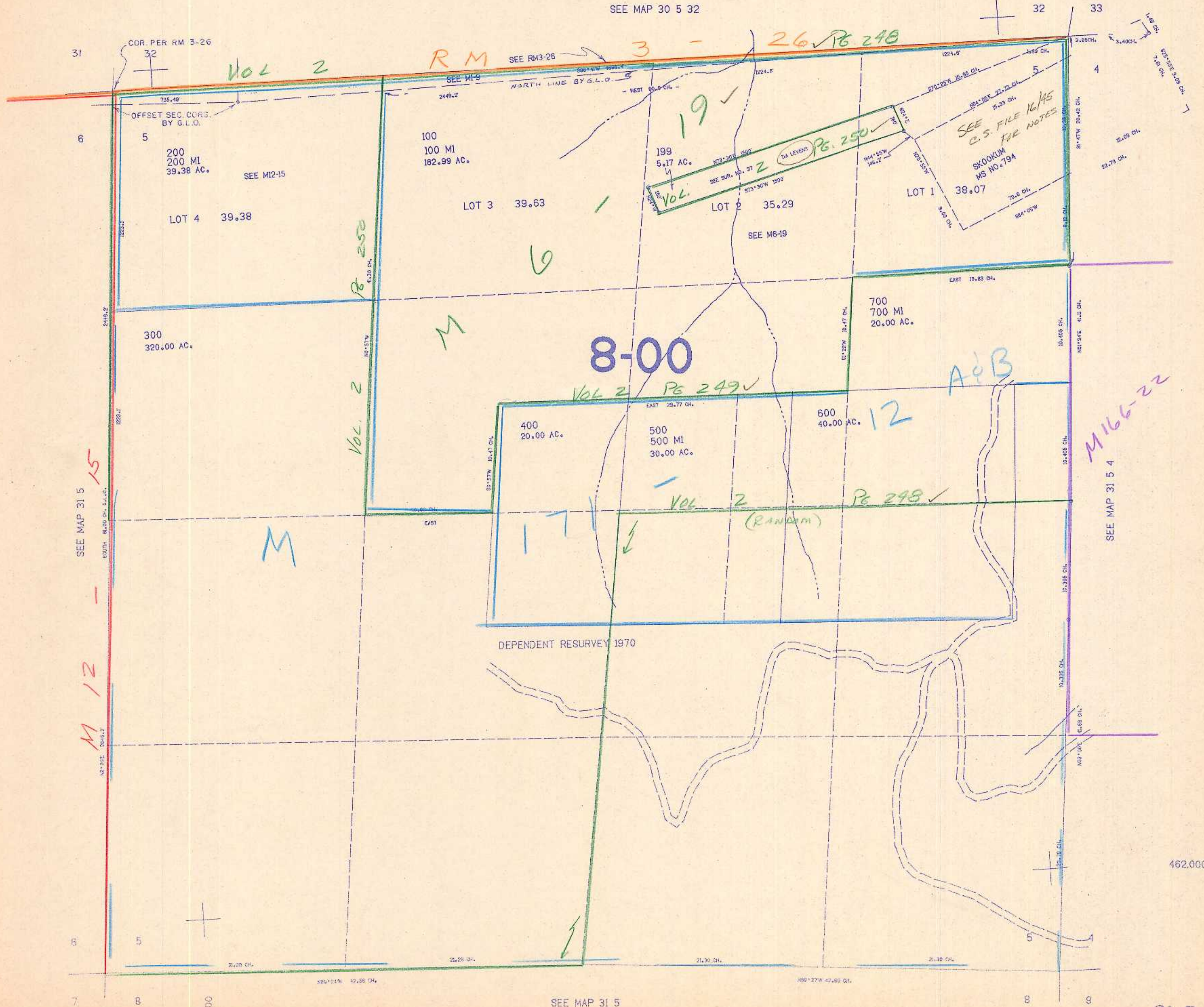
REVISED ON
8-21-91

31 5 5

THIS MAP WAS PREPARED FOR
ASSESSMENT PURPOSE ONLY.

1"=400'

SEE MAP 30 5 32



SEE MAP 31 5
M 12
M 15

SEE MAP 31 5 4
M 166-22

SEE MAP 31 5

31 5 5

9/1/91
LP