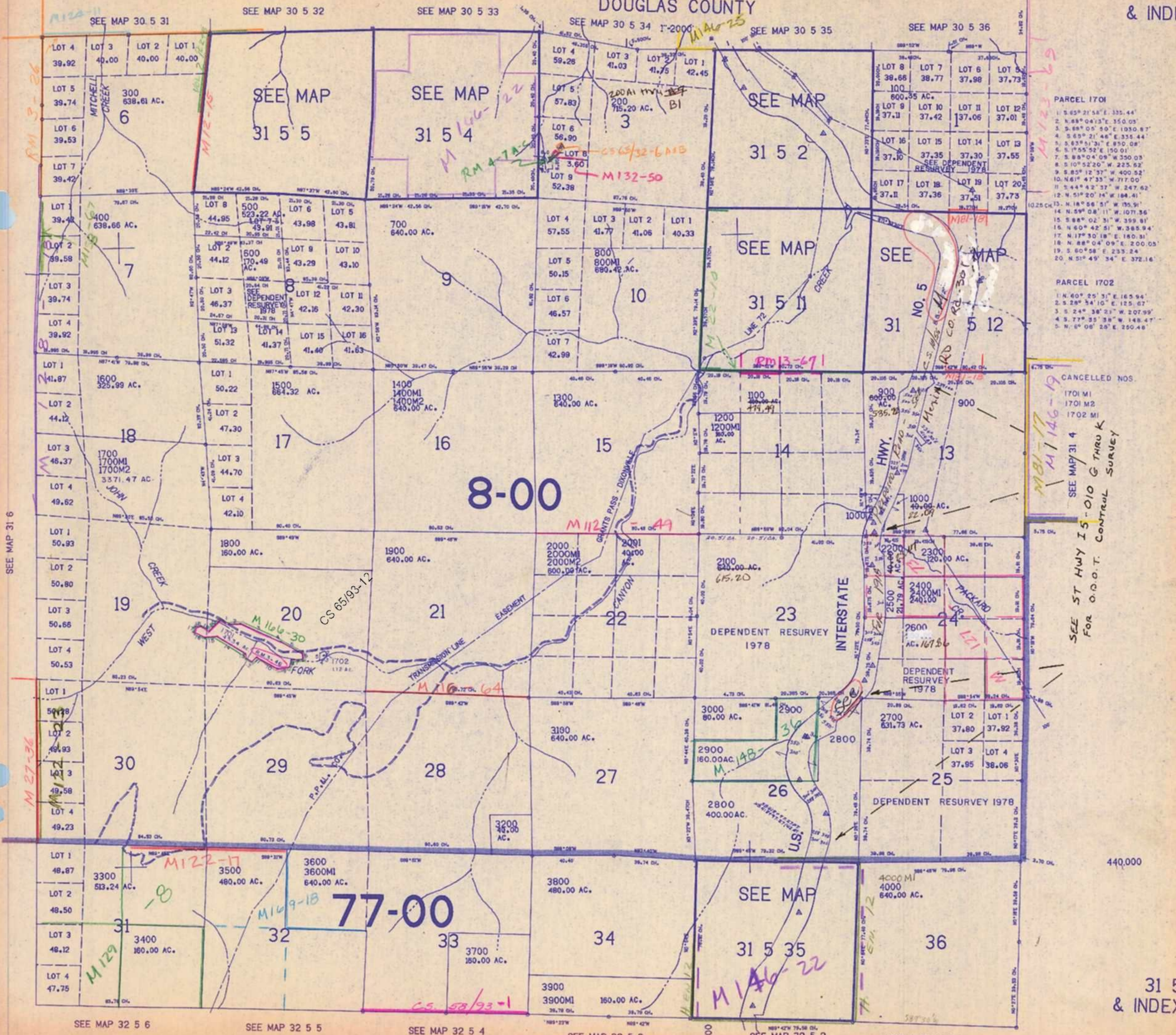


THIS MAP WAS PREPARED FOR ASSESSMENT PURPOSE ONLY.

T.31S. R.5W. W.M. DOUGLAS COUNTY



PARCEL 1701

1. S. 65° 21' 58" E. 335.44'
2. N. 88° 04' 13" E. 350.05'
3. S. 68° 05' 50" E. 1030.87'
4. S. 65° 21' 46" E. 335.44'
5. S. 63° 51' 31" E. 850.08'
6. S. 1° 55' 52" E. 150.01'
7. S. 88° 04' 09" W. 350.05'
8. S. 10° 52' 20" W. 225.62'
9. S. 85° 12' 37" W. 400.52'
10. N. 61° 47' 35" W. 717.00'
11. S. 44° 42' 37" W. 247.62'
12. N. 51° 20' 14" W. 184.41'
13. N. 18° 56' 51" W. 195.91'
14. N. 59° 08' 11" W. 1077.56'
15. S. 88° 02' 31" W. 359.81'
16. N. 60° 42' 51" W. 385.94'
17. N. 17° 30' 18" E. 180.31'
18. N. 88° 04' 09" E. 200.05'
19. S. 60° 58' E. 235.24'
20. N. 51° 49' 34" E. 372.16'

PARCEL 1702

1. N. 60° 25' 31" E. 165.94'
2. S. 28° 34' 10" E. 125.67'
3. S. 24° 38' 21" W. 207.99'
4. S. 77° 35' 38" W. 148.47'
5. N. 6° 08' 26" E. 250.46'

CANCELED NOS.

- 1701 M1
- 1701 M2
- 1702 M1

SEE MAP 31 4
SEE ST HWY 15-010 G THRU K
FOR O.O.T. CONTROL SURVEY

SEE MAP 31 6

SEE MAP 32 5 6

SEE MAP 32 5 5

SEE MAP 32 5 4

SEE MAP 32 5 3

SEE MAP 32 5 2

SEE MAP 32 5 1