

SECTION 21 T.31S. R.2W. W.M.  
DOUGLAS COUNTY

31 2 21

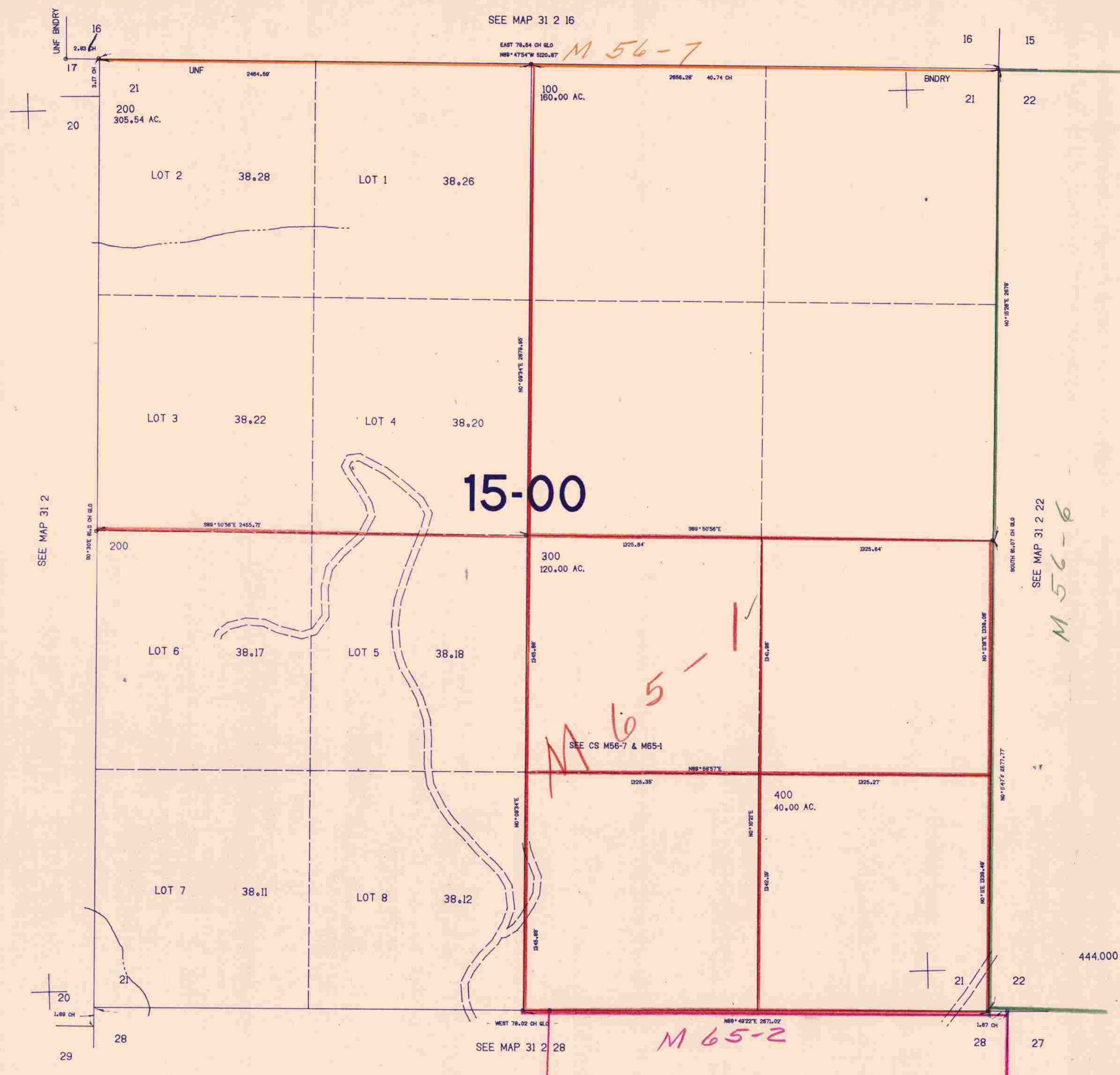
THIS MAP WAS PREPARED FOR  
ASSESSMENT PURPOSE ONLY.

1"=400'

SEE MAP 31 2 16

EAST 78.54 CH GLO  
N89°47'54"W 5220.87'

*M 56-7*



SEE MAP 31 2

SEE MAP 31 2 22

*M 56-6*

SEE MAP 31 2 28

*M 65-2*

1345.000

31 2 21

*1/8/21*