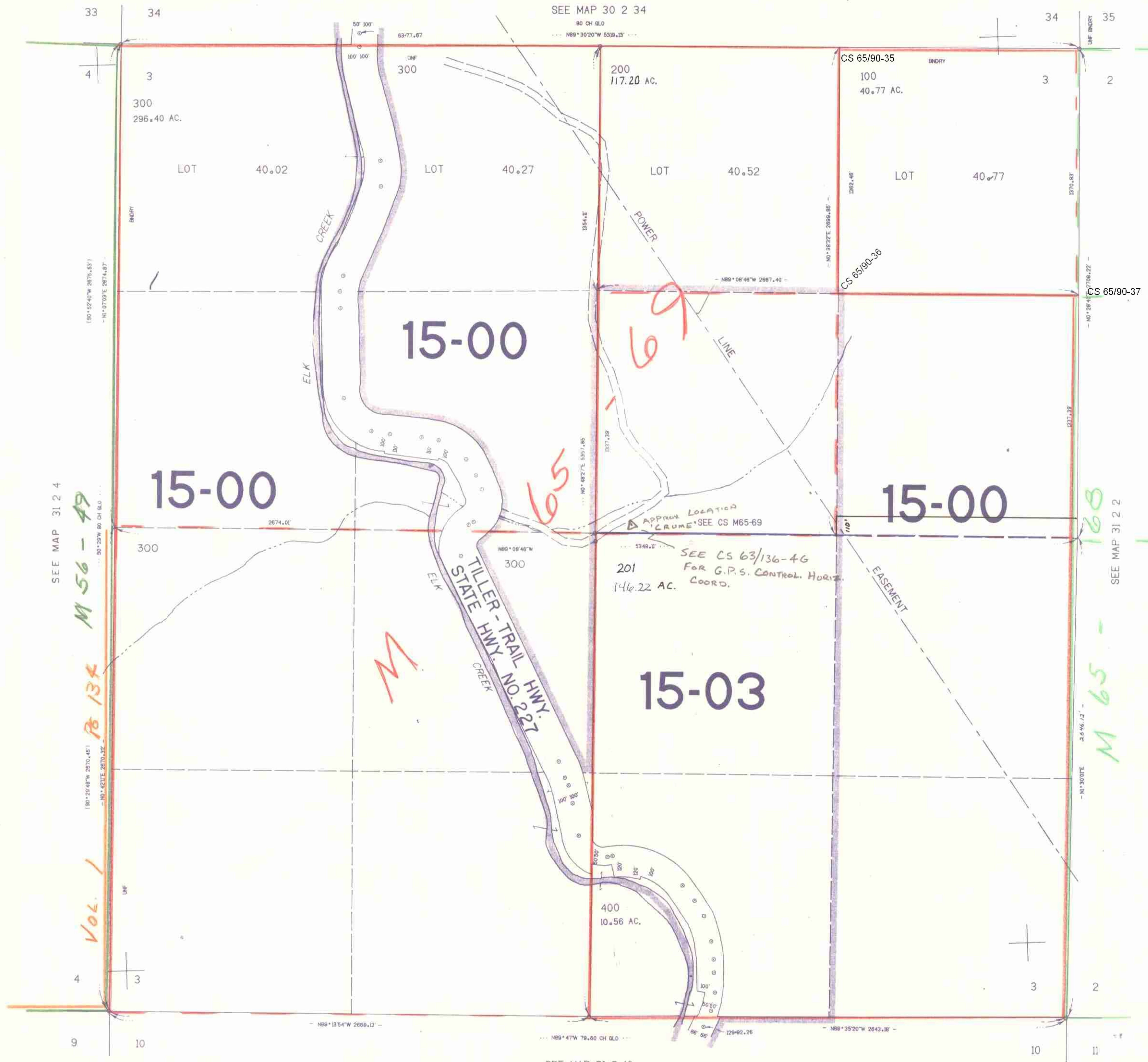


SECTION 3 T.31S. R.2W. W.M.
DOUGLAS COUNTY

31 2 3

THIS MAP WAS PREPARED FOR
ASSESSMENT PURPOSE ONLY.

1"=400'



SEE MAP 31 2 4

M 56 - 49

R 134

VOL. 1

15-00

15-00

15-00

15-03

65

APPROX LOCATION
"CRUME" SEE CS M65-69
SEE CS 63/136-46
FOR G.P.S. CONTROL HORIZ.
COORD.

M 65 - 168

SEE MAP 31 2 2

460.000

SEE MAP 31 2 10

31 2 3

1:351,000

104