

T.31S. R.2W. W.M.
DOUGLAS COUNTY

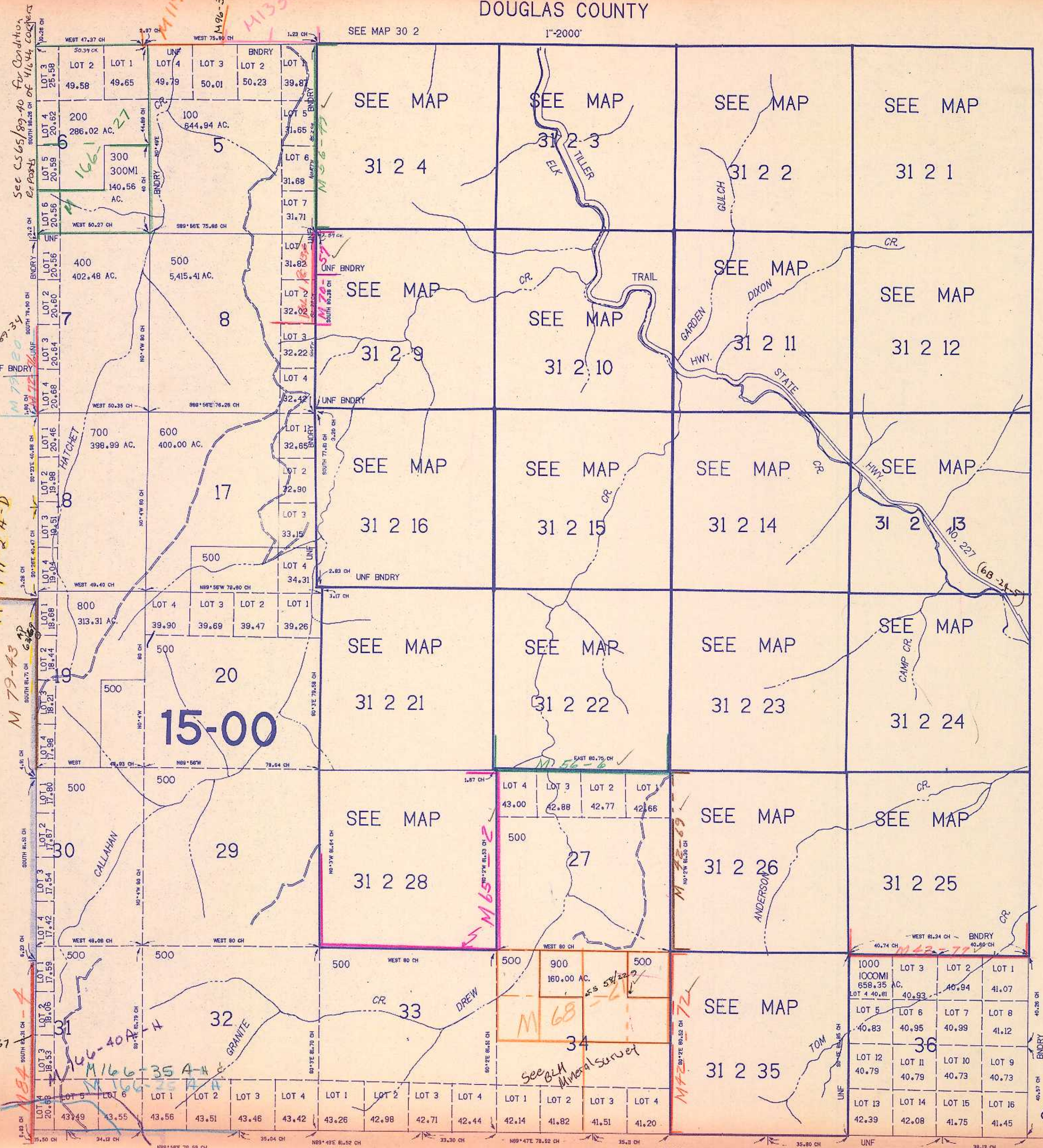
THIS MAP WAS PREPARED FOR
ASSESSMENT PURPOSE ONLY.

See C-565/89-90 for Condition
of 41644 Coverts
of Park
S. 1/4
Sec 12
C-565/89-90

SEE MAP 31 3
M 171-2 A-D

M 79-43

M 111-67



SEE MAP 31 1