

NE1/4 SEC. 34 T.30S. R.3W. W.M.
DOUGLAS COUNTY

REVISED ON
2-18-93

30 3 34A

THIS MAP WAS PREPARED FOR
ASSESSMENT PURPOSE ONLY.

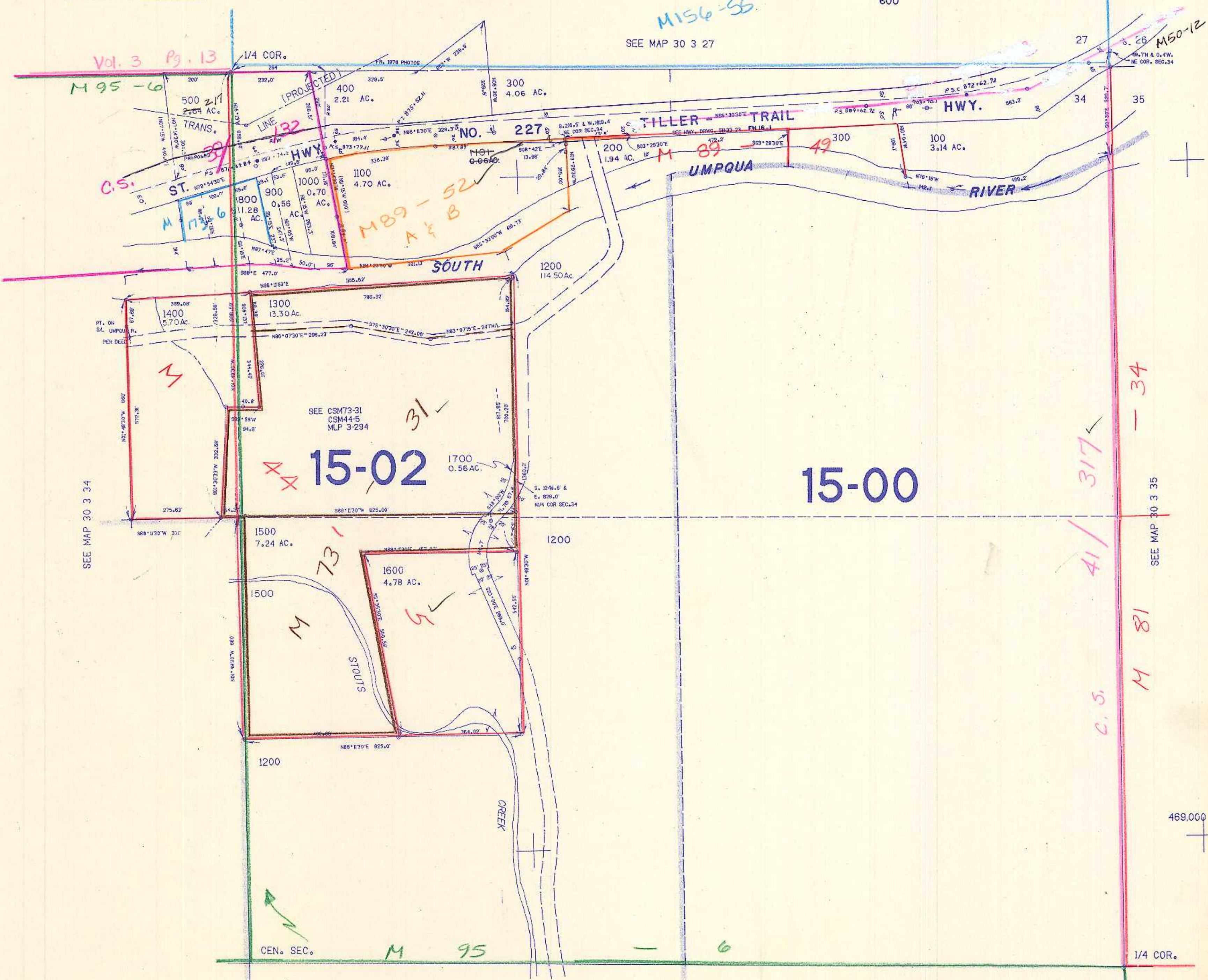
1"=200'

CANCELLED PARCEL NO'S
700
600

SEE MAP 30 3 27

Vol. 3 Pg. 13
M 95 - 6

M 156 - 55



SEE MAP 30 3 34

SEE CSM73-31
CSM44-5
MLP 3-294

15-02
1700
0.56 AC.

15-00

SEE MAP 30 3 35

CEN. SEC. M 95 - 6

SEE MAP 30 3 34

30 3 34A

469,000

1,318,000

nw
2/93
bc