

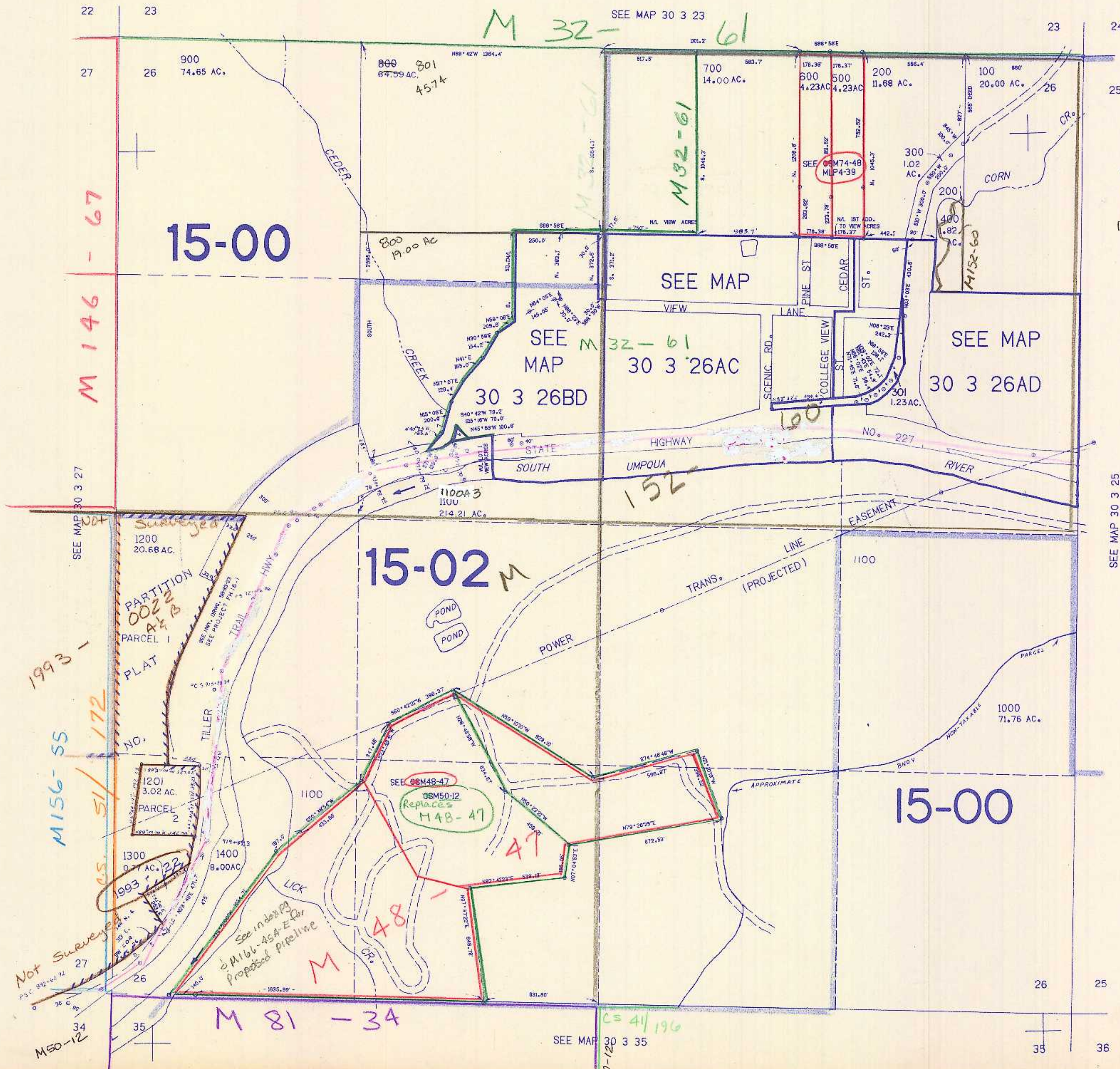
SECTION 26 T.30S. R.3W. W.M.
DOUGLAS COUNTY

REVISED ON
5-25-94

30 3 26
& INDEX

THIS MAP WAS PREPARED FOR
ASSESSMENT PURPOSE ONLY.

1"=400'



476.000
CANCELLED NO'S
701
302
303
(100A)

SEE MAP 30 3 25

1,325,000

30 3 26
& INDEX

NR
6/94bc