

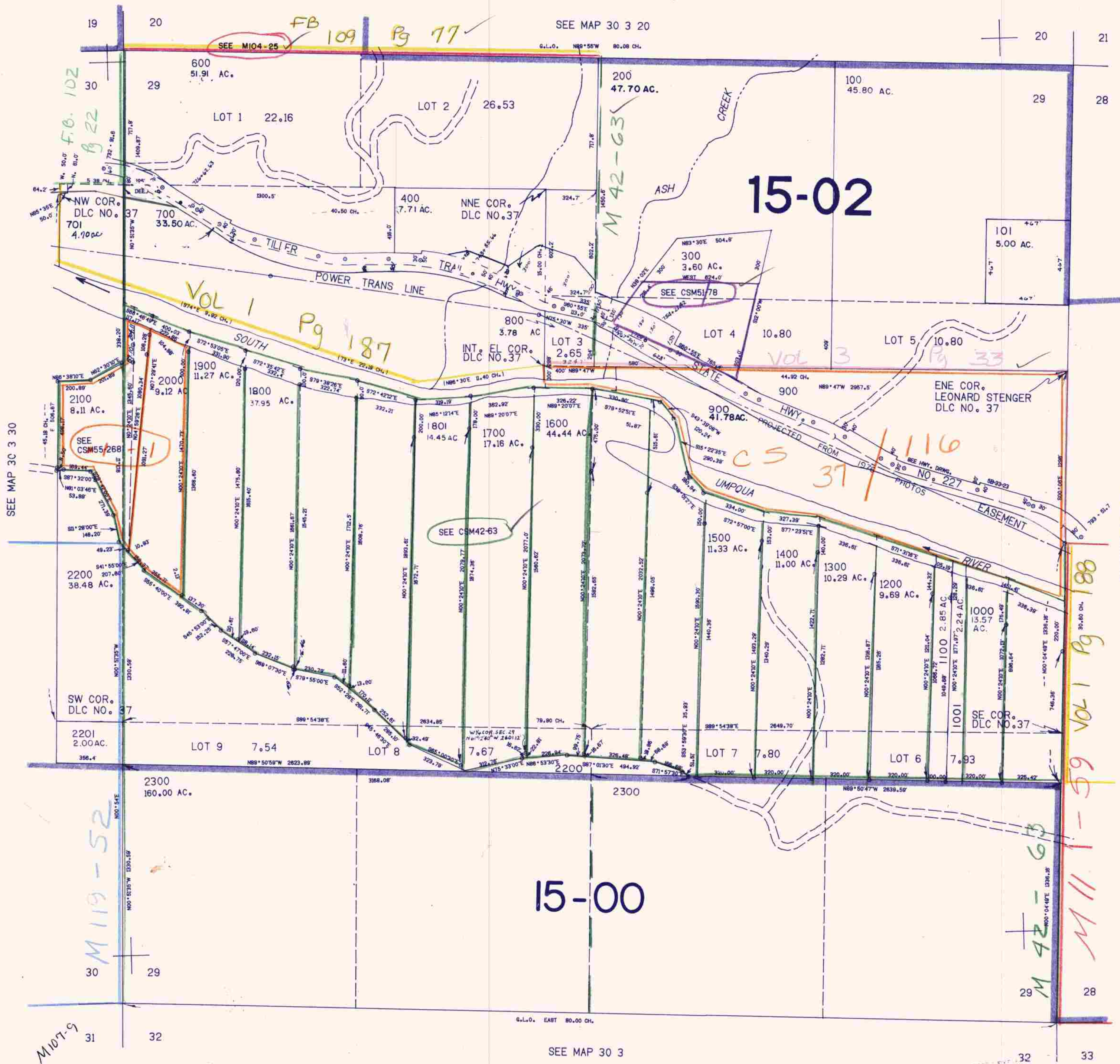
SECTION 29 T.30S. R.3W. W.M.
DOUGLAS COUNTY

REVISED ON
3-12-96

30 3 29

THIS MAP WAS PREPARED FOR
ASSESSMENT PURPOSE ONLY.

1"=400'



CANCELLED NO.
500 401 702

SEE MAP 30 3 28
M 101-04
M 99-76
M 97-21

472.000

30 3 29

1309.000

3/10/96
BC