

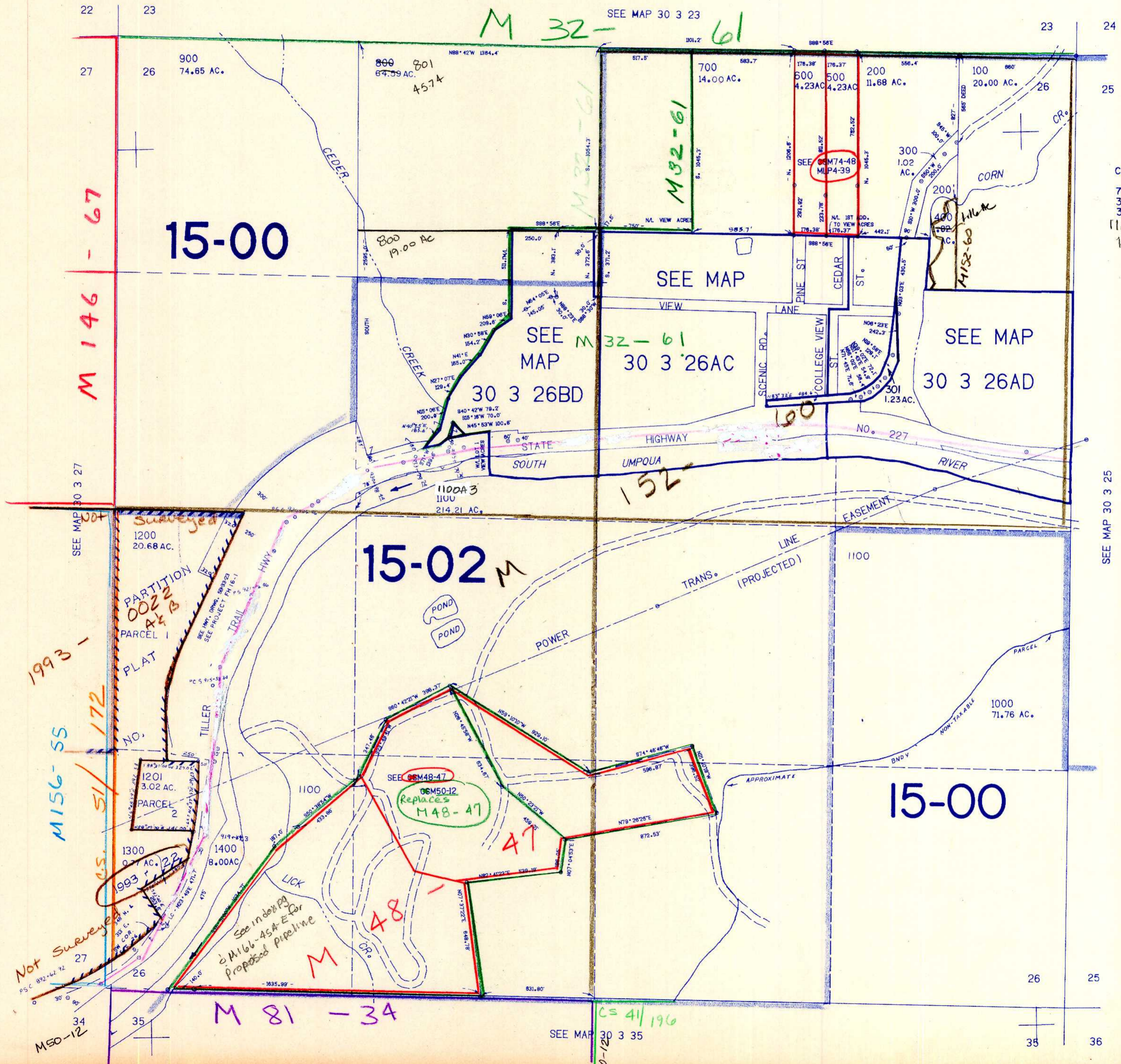
SECTION 26 T.30S. R.3W. W.M.
DOUGLAS COUNTY

REVISED ON
5-25-94

30 3 26
& INDEX

THIS MAP WAS PREPARED FOR
ASSESSMENT PURPOSE ONLY.

1"=400'



476.000
 CANCELLED NO'S
 701
 302
 303
 1100A1
 1100A2

30 3 26
& INDEX

NW
6/9480