

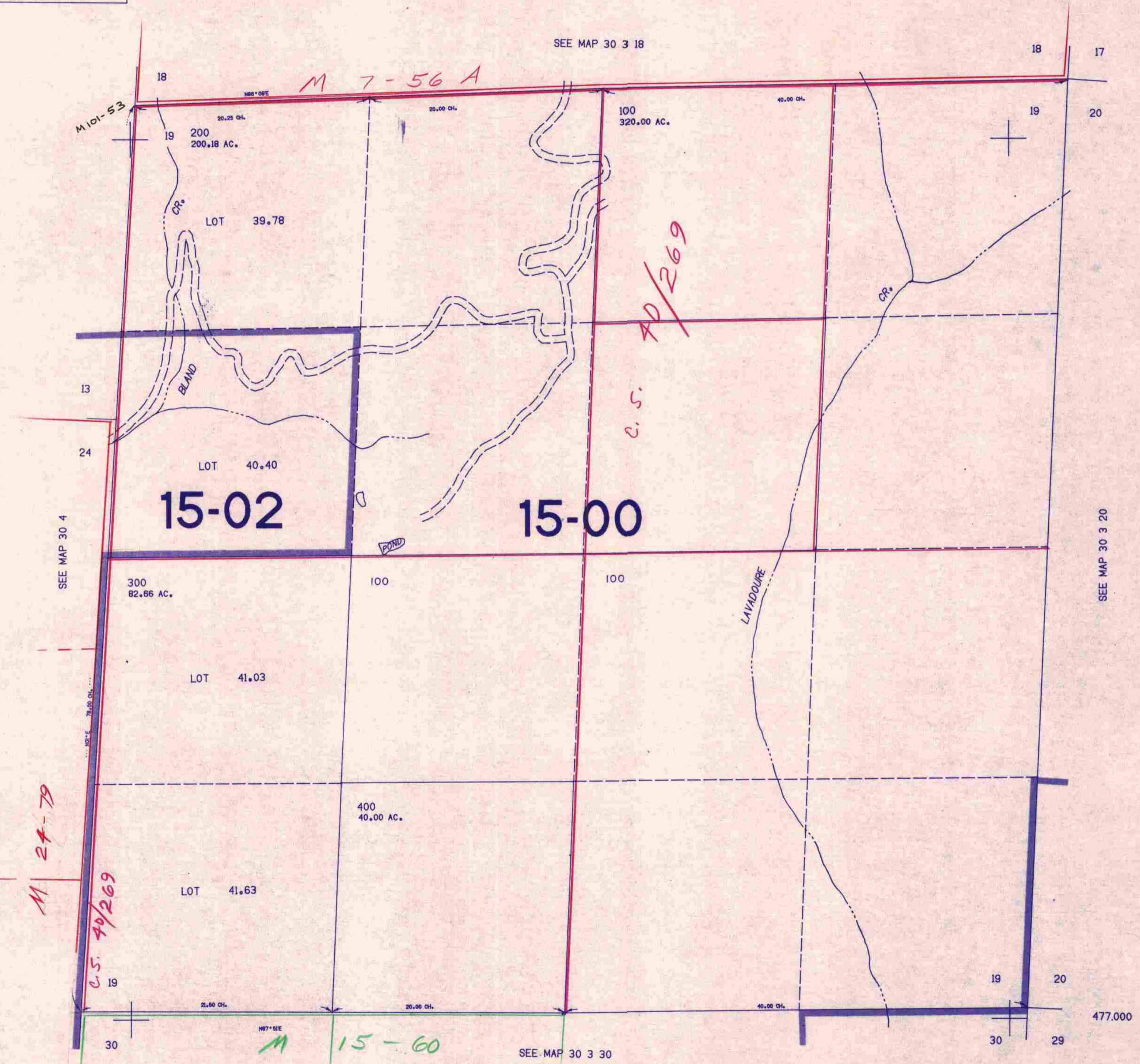
SECTION 19 T.30S. R.3W. W.M.  
DOUGLAS COUNTY

30 3 19

THIS MAP WAS PREPARED FOR  
ASSESSMENT PURPOSE ONLY.

1"=400'

SEE MAP 30 3 18



SEE MAP 30 4

SEE MAP 30 3 20

SEE MAP 30 3 30

477,000

1,304,000

30 3 19

8/84 *BS*