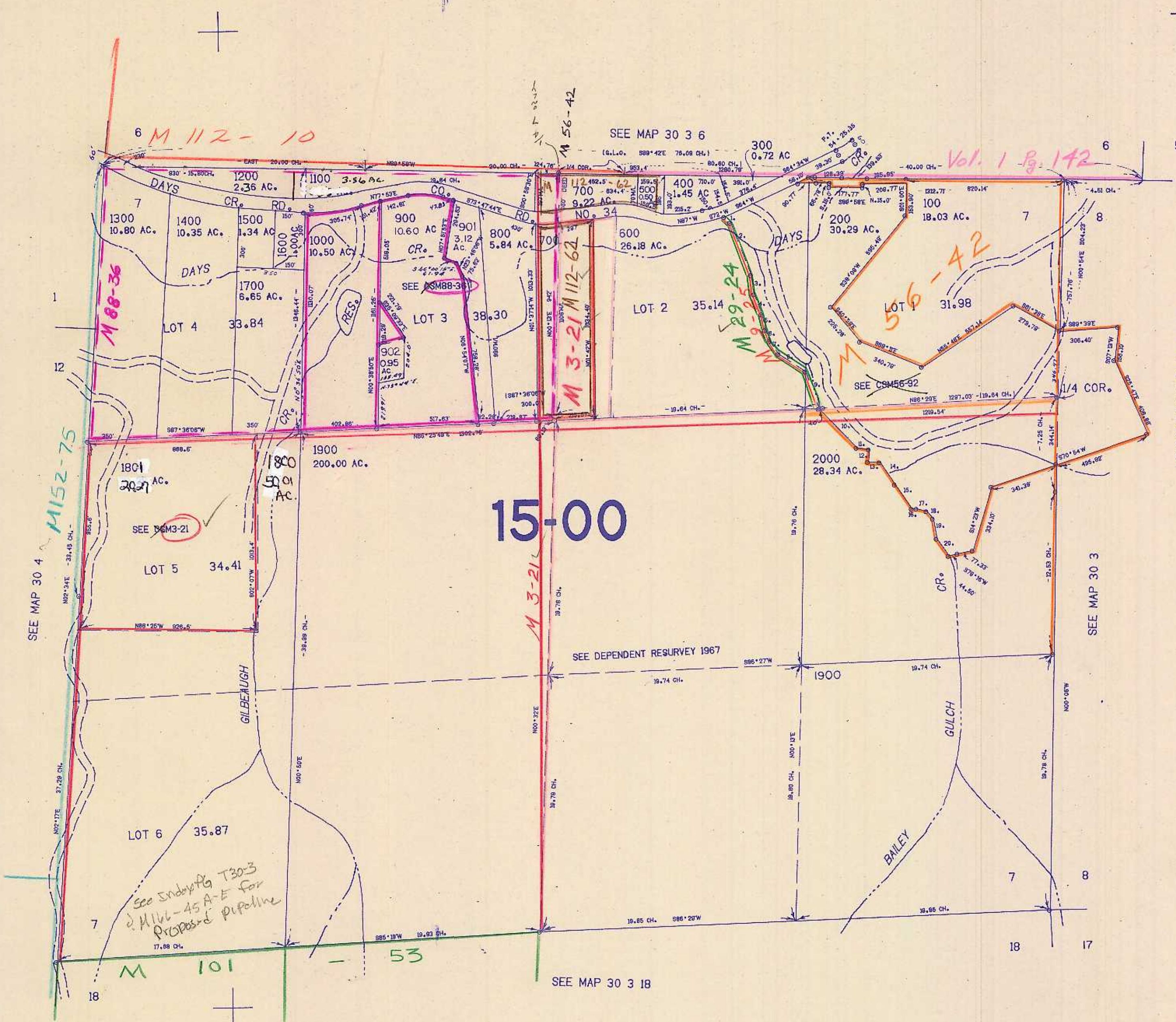


SECTION 7 T.30S. R.3W. W.M.  
DOUGLAS COUNTY

30 3 7

THIS MAP WAS PREPARED FOR  
ASSESSMENT PURPOSE ONLY.

1"-400'



- PARCEL 200
1. S44°52'E 42.8'
  2. S23°52'E 289.3'
  3. S08°34'E 99.9'
  4. S90°38'E 11.8'
  5. S4°53'E 87.4'
  6. S21°58'E 83.2'
  7. S37°38'E 79.6'
  8. S58°38'E 154.7'
  9. S23°22'E 192.3'
  10. N44°24'W 276.02'
  11. N85°53'W 64.38'
  12. N06°55'E 63.32'
  13. S88°55'W 68.35'
  14. N88°20'W 142.14'
  15. N57°18'W 142.60'
  16. S81°25'W 26.84'
  17. N78°52'W 83.37'
  18. N88°33'W 48.82'
  19. N3°42'W 206.78'
  20. N58°20'W 102.77'

487,000

30 3 7

8/84 BS