

SW1/4 SEC.36 T.27S. R.7W. W.M.
DOUGLAS COUNTY

REVISED ON
9-30-91

27 7 36C

1"=200'

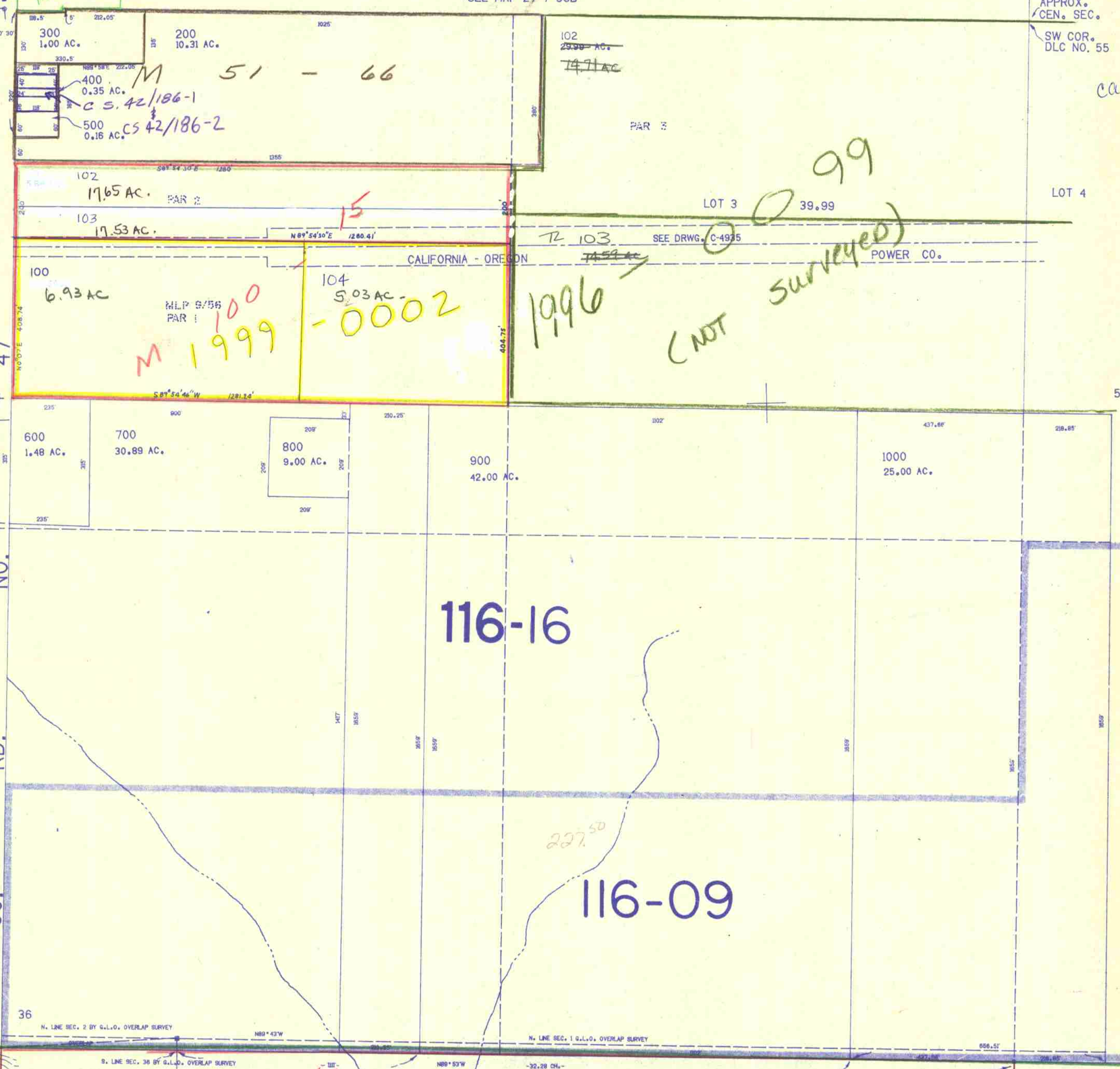
SEE MAP 27 7 36B

APPROX.
CEN. SEC.
SW COR.
DLC NO. 55

M 108-15
1/4 COR.

THIS MAP WAS PREPARED FOR
ASSESSMENT PURPOSE ONLY.

conc. 101
105



SEE MAP 27 7 35D

47

NO.

RD.

CO.

35
M 89-47

36
N. LINE SEC. 2 BY G.L.O. OVERLAP SURVEY

S. LINE SEC. 36 BY G.L.O. OVERLAP SURVEY

N. LINE SEC. 1 G.L.O. OVERLAP SURVEY

SEE MAP 28 7 1

M 56-32 M 59-7

564.000

SEE MAP 27 7 36

27 7 36C

1.206,000

10/1/28