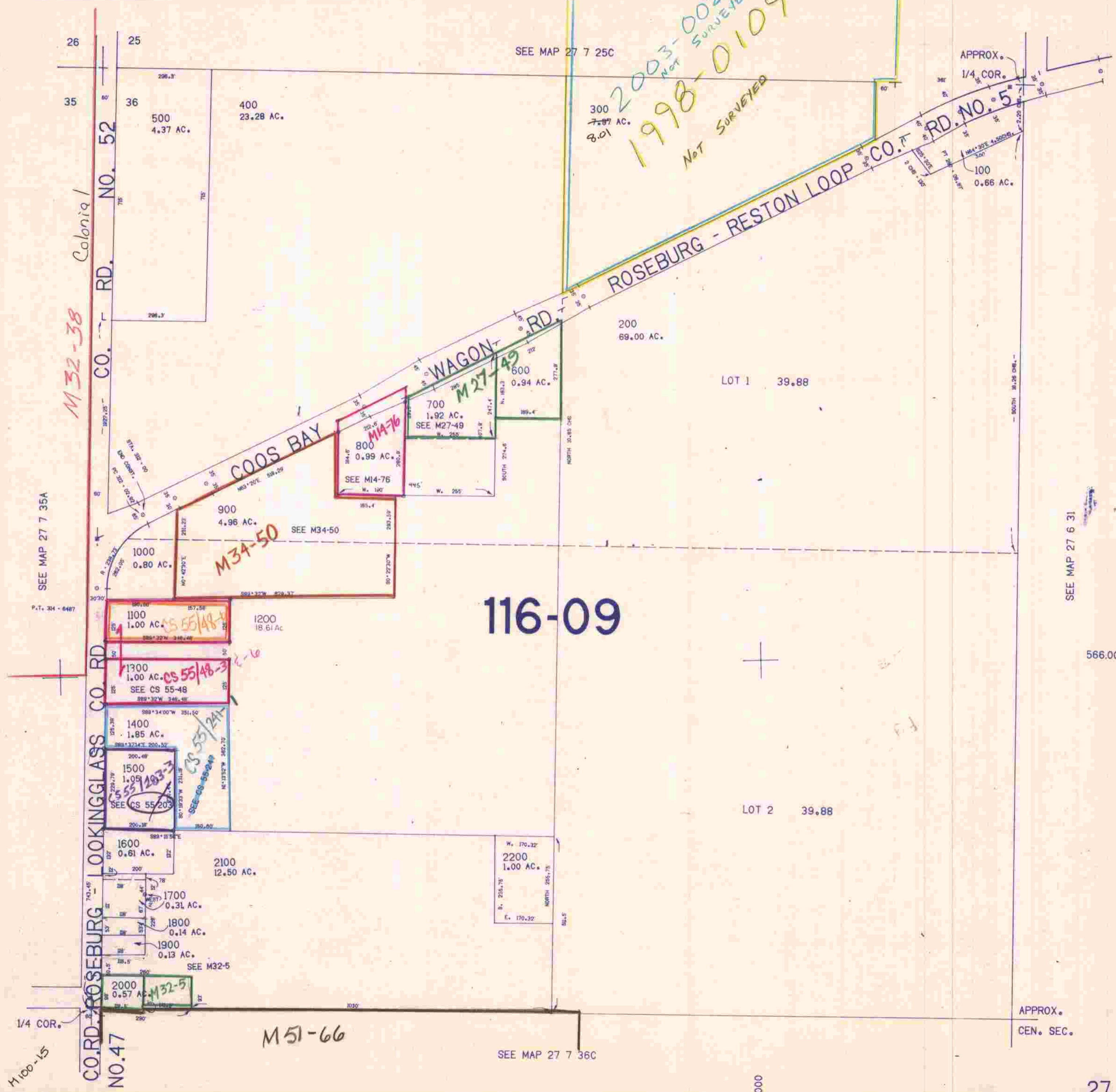


NW1/4 SEC.36 T.27S. R.7W. W.M.
DOUGLAS COUNTY

27 7 36B

THIS MAP WAS PREPARED FOR
ASSESSMENT PURPOSE ONLY.

2003-0027
NOT SURVEYED
1998-0109
NOT SURVEYED



M32-38

M34-50

116-09

M51-66

M14-76

M27-49

CS 55/48-3

CS 55/24

CS 55/203-3

M32-5

M100-15

CO. RD. NO. 47
ROSEBURG - LOOKINGGLASS CO. RD.

CO. RD. NO. 52
Colonia

ROSEBURG - RESTON LOOP CO. RD. NO. 5

SEE MAP 27 7 36C

SEE MAP 27 7 35A

SEE MAP 27 6 31

APPROX.
CEN. SEC.

1:206,000

27 7 36B

6/18/05
C.M.O.