

SECTION 36 T.27S. R.7W. W.M.
DOUGLAS COUNTY

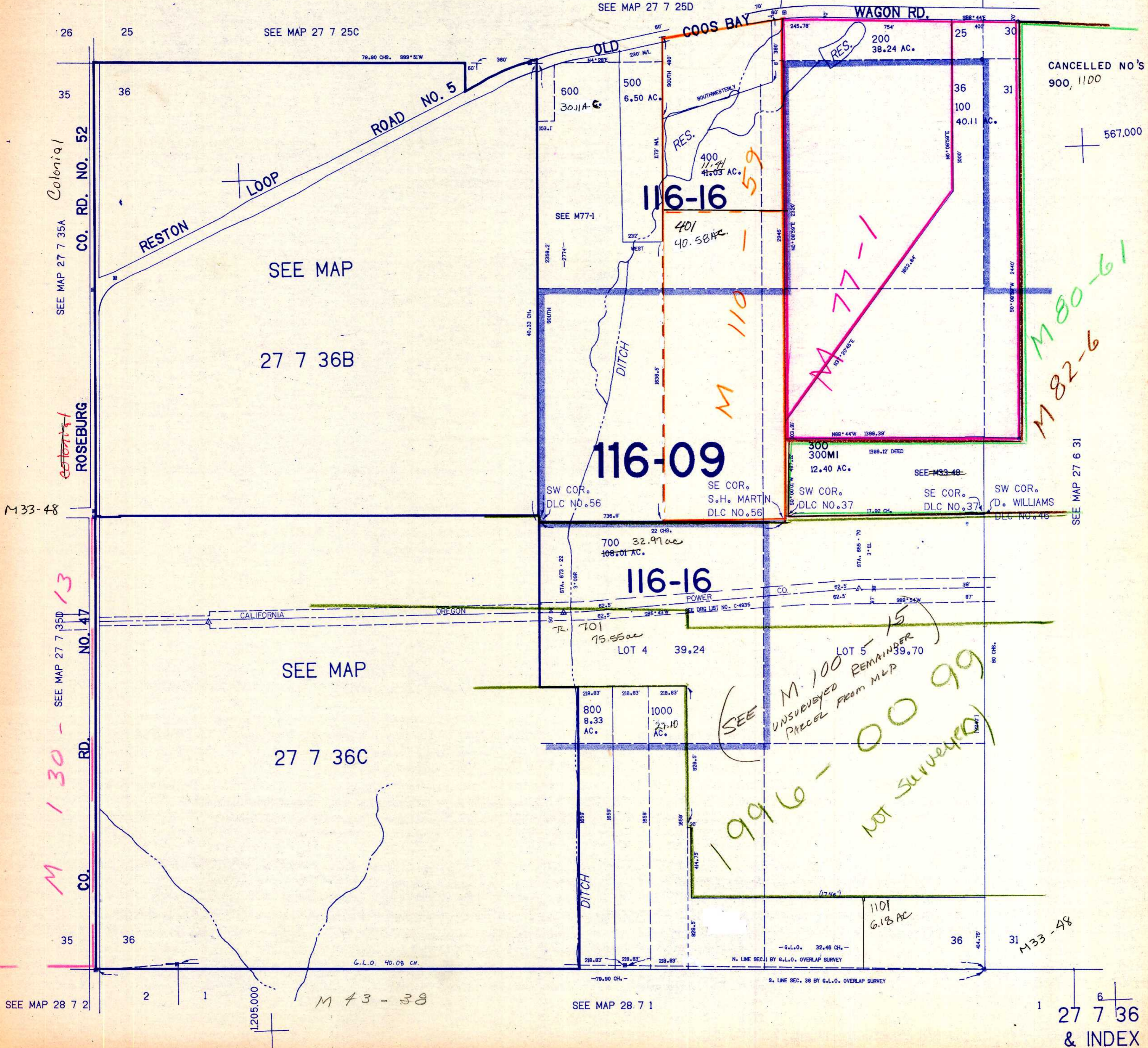
REVISED ON
4-1-91

27 7 36
& INDEX

THIS MAP WAS PREPARED FOR
ASSESSMENT PURPOSE ONLY.

1"=400'

SEE MAP 27 7 25



27 7 36
& INDEX

4/1/91