

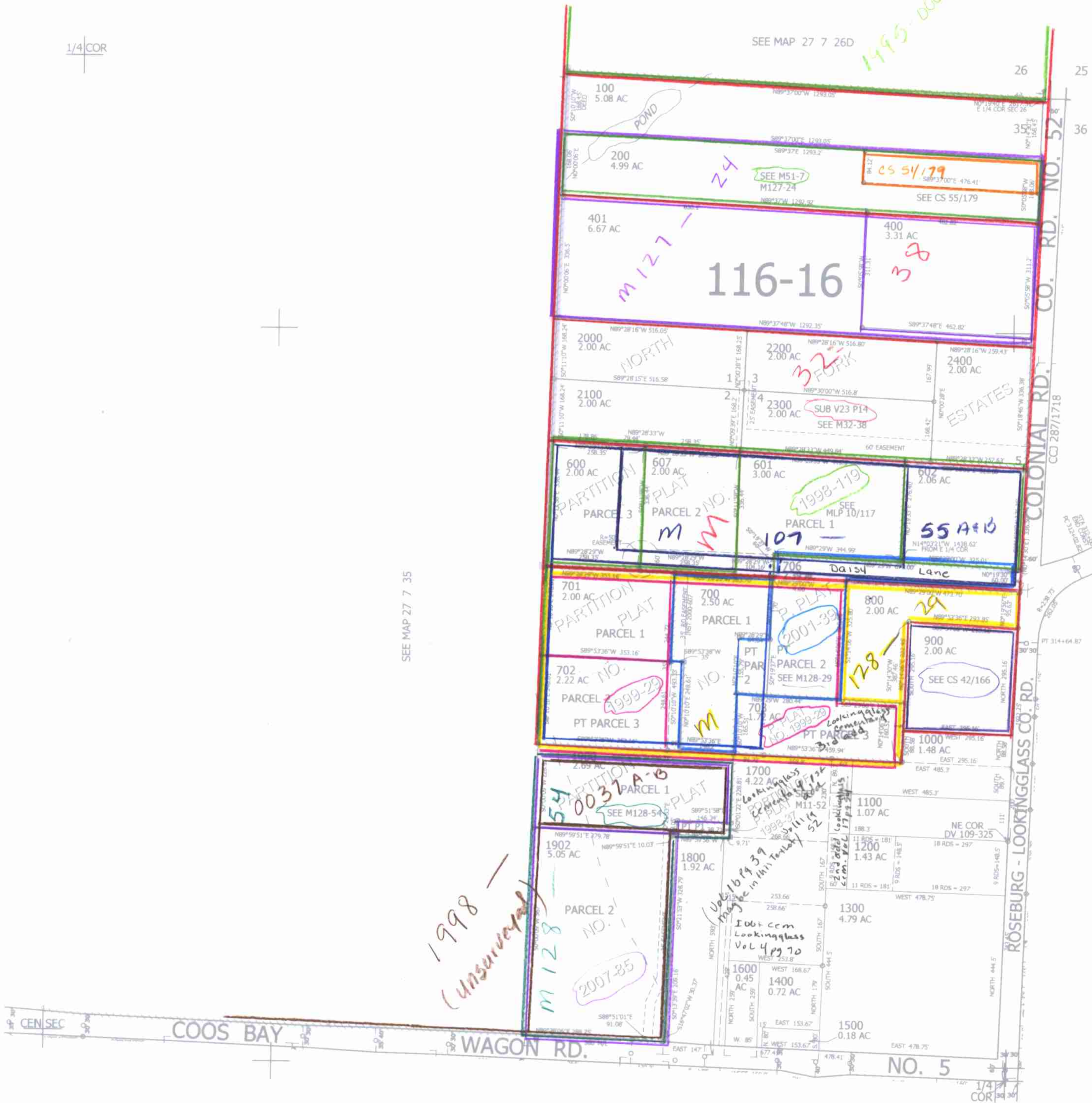
THIS MAP WAS PREPARED FOR ASSESSMENT PURPOSE ONLY.

NE1/4 SEC.35 T.27S. R.7W. W.M.
DOUGLAS COUNTY
1" = 200'

REVISED ON
5-13-08

27 7 35A

1/4 COR



CANCELLED NO'S
300 801 603
606 604 605
705 704 1801
1901 500

SEE MAP 27 7 36B

SEE MAP 27 7 35

565,000

SEE MAP 27 7 35D

4,125,000

5/16/08

27 7 35A