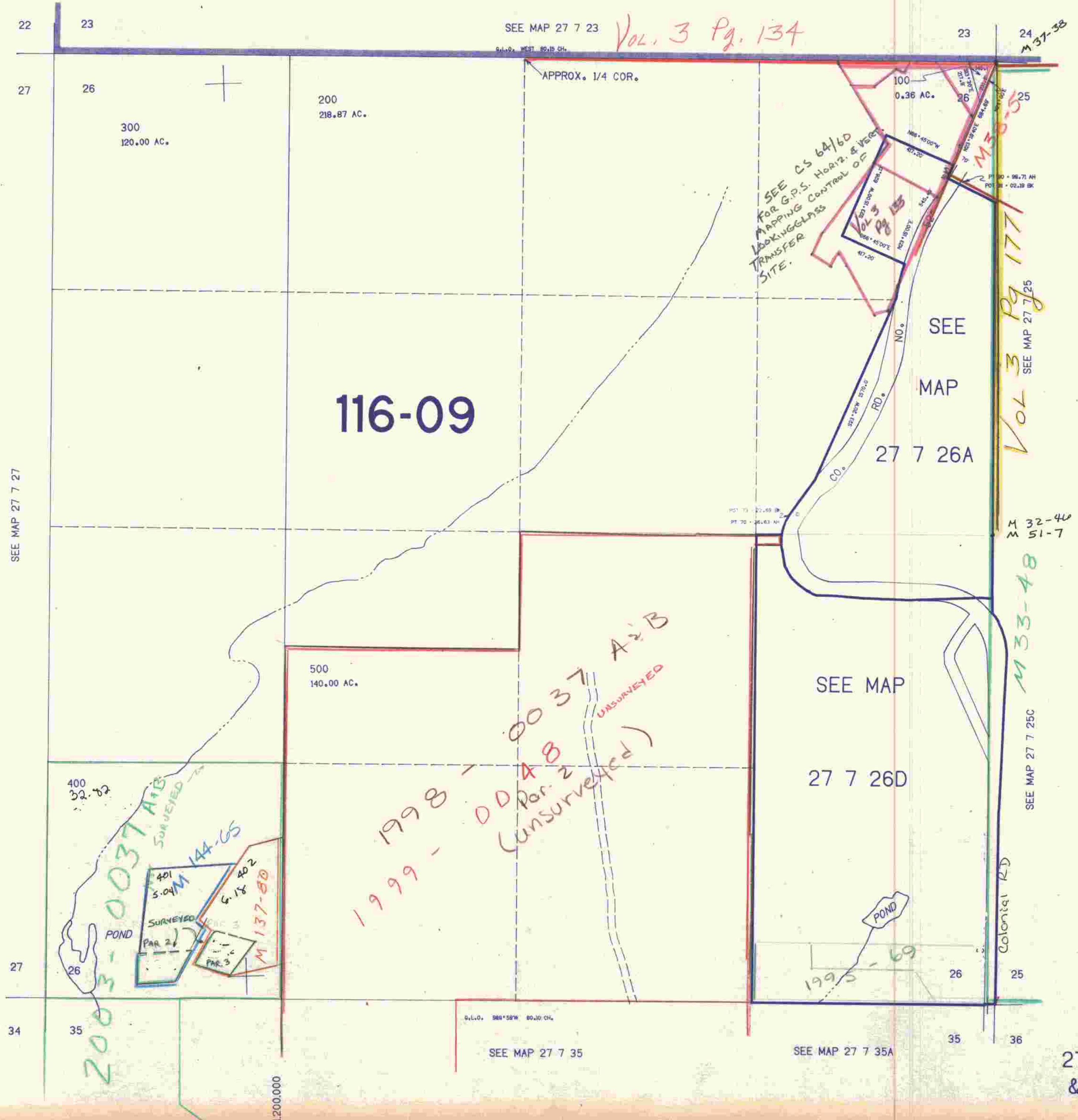


SECTION 26 T.27S. R.7W. W.M.  
DOUGLAS COUNTY

27 7 26  
& INDEX

THIS MAP WAS PREPARED FOR  
ASSESSMENT PURPOSE ONLY.

1"=400'



*Vol. 3 Pg. 134*

**116-09**

SEE CS 64/60  
FOR G.P.S. HORIZ. & VERT.  
LOOKINGGLASS  
TRANSFER  
SITE.

*1999-0048 (unsurveyed)*  
*1998-0037 A-B (unsurveyed)*

*2003-0037 A-B SURVEYED*  
*5.04 M 144-65*  
*6.12 202*  
*M 137-80*

*1995-69*

*Vol 3 Pg 177*

*M 33-48*

27 7 26  
& INDEX

*U 185*

CONTROL LAYOUT TRAP CHECKED