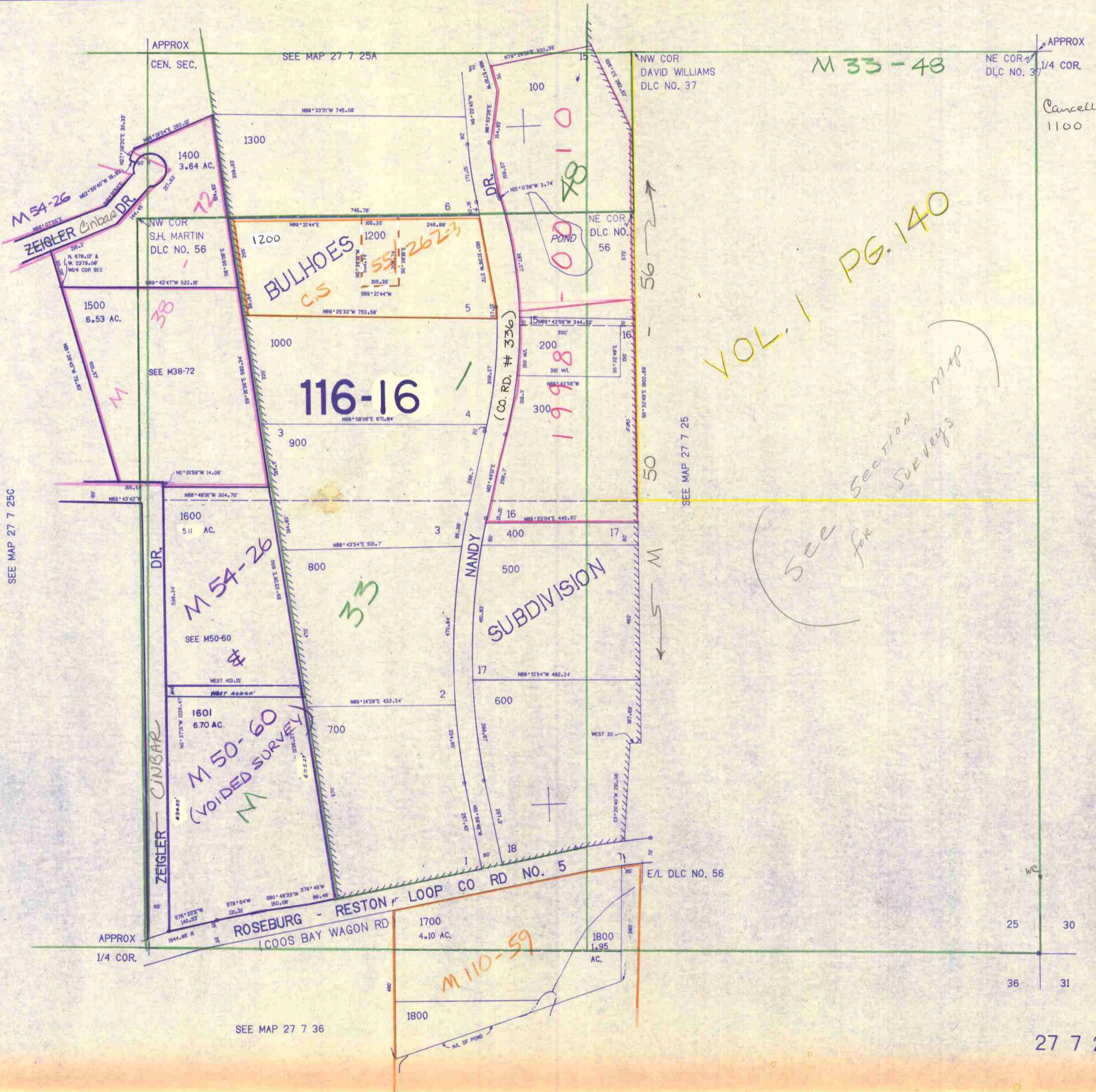


SE1/4 SEC. 25 T.27S. R.7W. W.M.  
DOUGLAS COUNTY

27 7 25D

THIS MAP WAS PREPARED FOR  
ASSESSMENT PURPOSE ONLY.

1"=200'



M 33-48

VOL. 1 PG. 140

See for section map surveys

Cancelled Nos  
1100

CONTROL LAYOUT CHECKED

1206.000

27 7 25D

4-88