

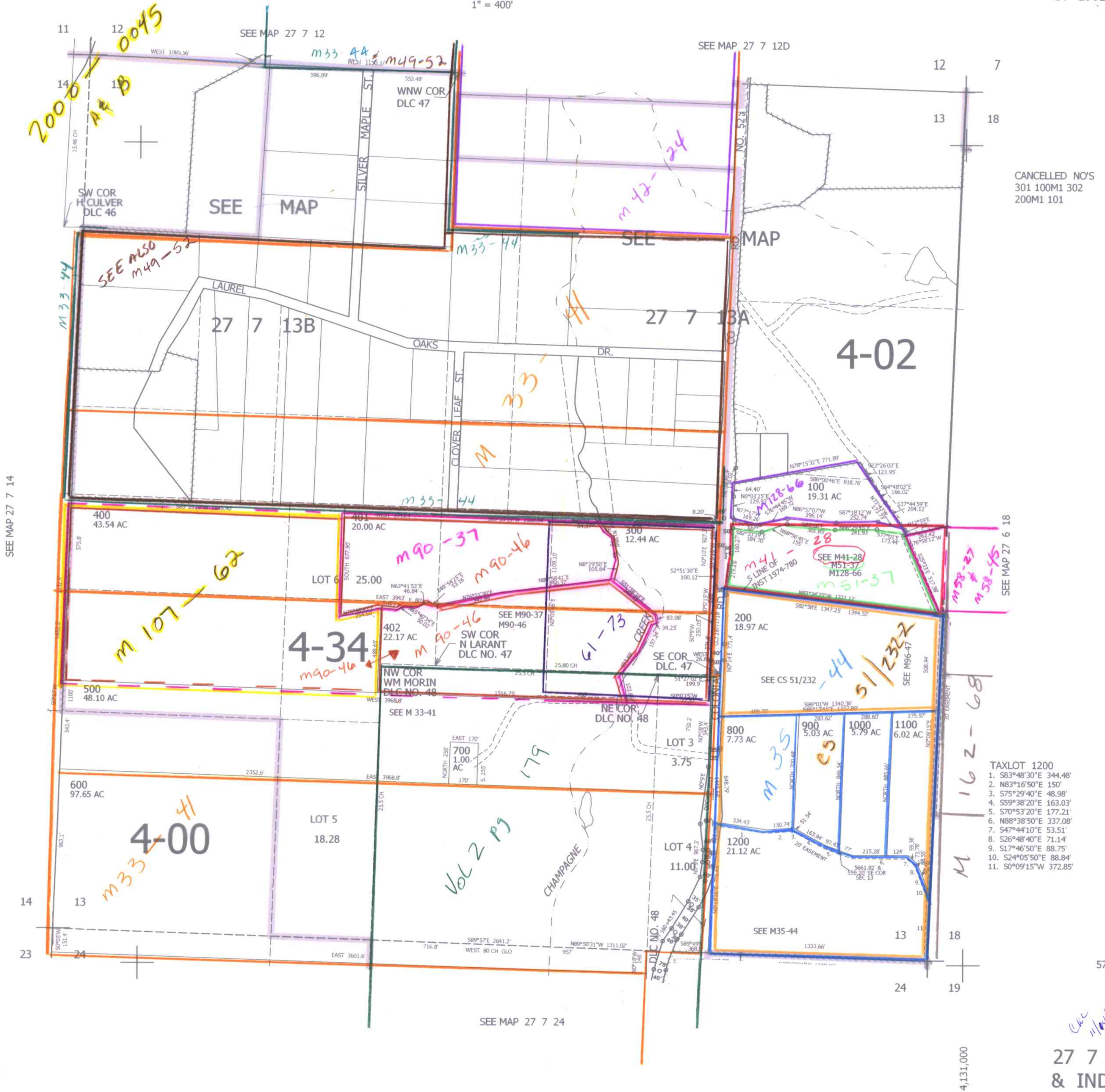
THIS MAP WAS PREPARED FOR  
ASSESSMENT PURPOSE ONLY.

# SEC.13 T.27S. R.7W. W.M. DOUGLAS COUNTY

REVISED ON  
11-7-07

## 27 7 13 & INDEX

1" = 400'



CANCELLED NO'S  
301 100M1 302  
200M1 101

- TAXLOT 1200
1. S83°48'30"E 344.48'
  2. N83°16'50"E 150'
  3. S75°29'40"E 48.98'
  4. S59°38'20"E 163.03'
  5. S70°53'20"E 177.21'
  6. N88°38'50"E 337.08'
  7. S47°44'10"E 53.51'
  8. S26°48'40"E 71.14'
  9. S17°46'50"E 88.75'
  10. S24°05'50"E 88.84'
  11. S0°09'15"W 372.85'

578,000

## 27 7 13 & INDEX

JP