

THIS MAP WAS PREPARED FOR ASSESSMENT PURPOSE ONLY.

NE1/4NE1/4 SEC.12 T.27S. R.7W. W.M. DOUGLAS COUNTY

1" = 100'

REVISED ON

27 7 12AA

SEE MAP 27 7 1DD

SEE MAP 27 7 12

SEE MAP 27 6 7

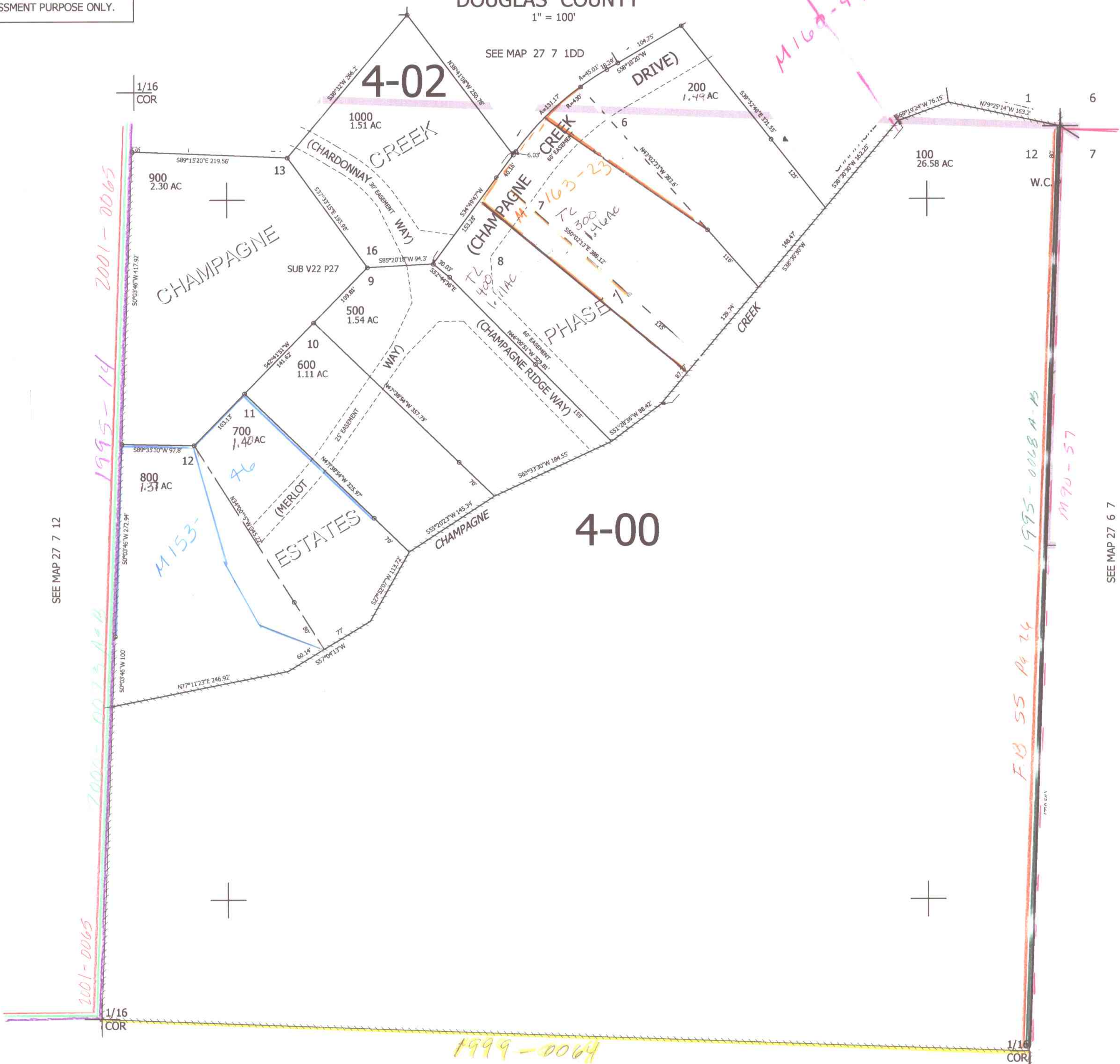
SEE MAP 27 7 12

4,131,000

27 7 12AA

CANCELLED NO'S

587,500



cmw 1/2/07 JCV