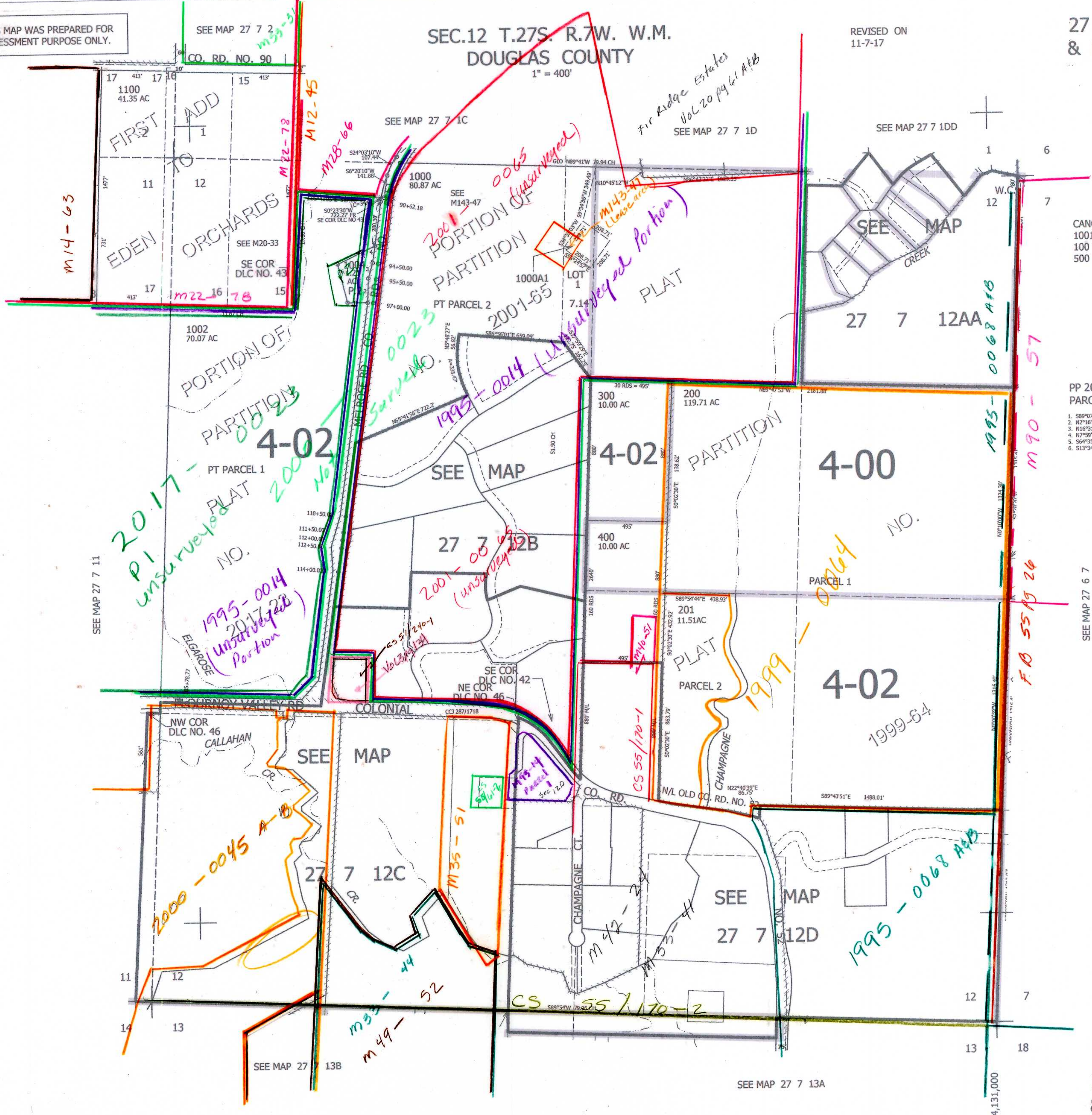


THIS MAP WAS PREPARED FOR ASSESSMENT PURPOSE ONLY.

SEC.12 T.27S. R.7W. W.M.
DOUGLAS COUNTY

1" = 400'

REVISED ON
11-7-17



CANCELLED NO'S
1001 1003
100 THRU 106
500 THRU 900

PP 2017-23
PARCEL 2

1. S89°10'55"E 126.81'
2. N2°16'51"E 150.75'
3. N16°31'20"E 101.12'
4. N7°59'29"E 107.52'
5. S64°35'32"W 260.53'
6. S13°34'14"E 249.46'

SEE MAP 27 6 7

584,000

CW
1/5/17