

THIS MAP WAS PREPARED FOR ASSESSMENT PURPOSE ONLY.

27 7 1C

SW1/4 SEC.1 T.27S. R.7W. W.M.
DOUGLAS COUNTY

REVISED ON
5-3-17

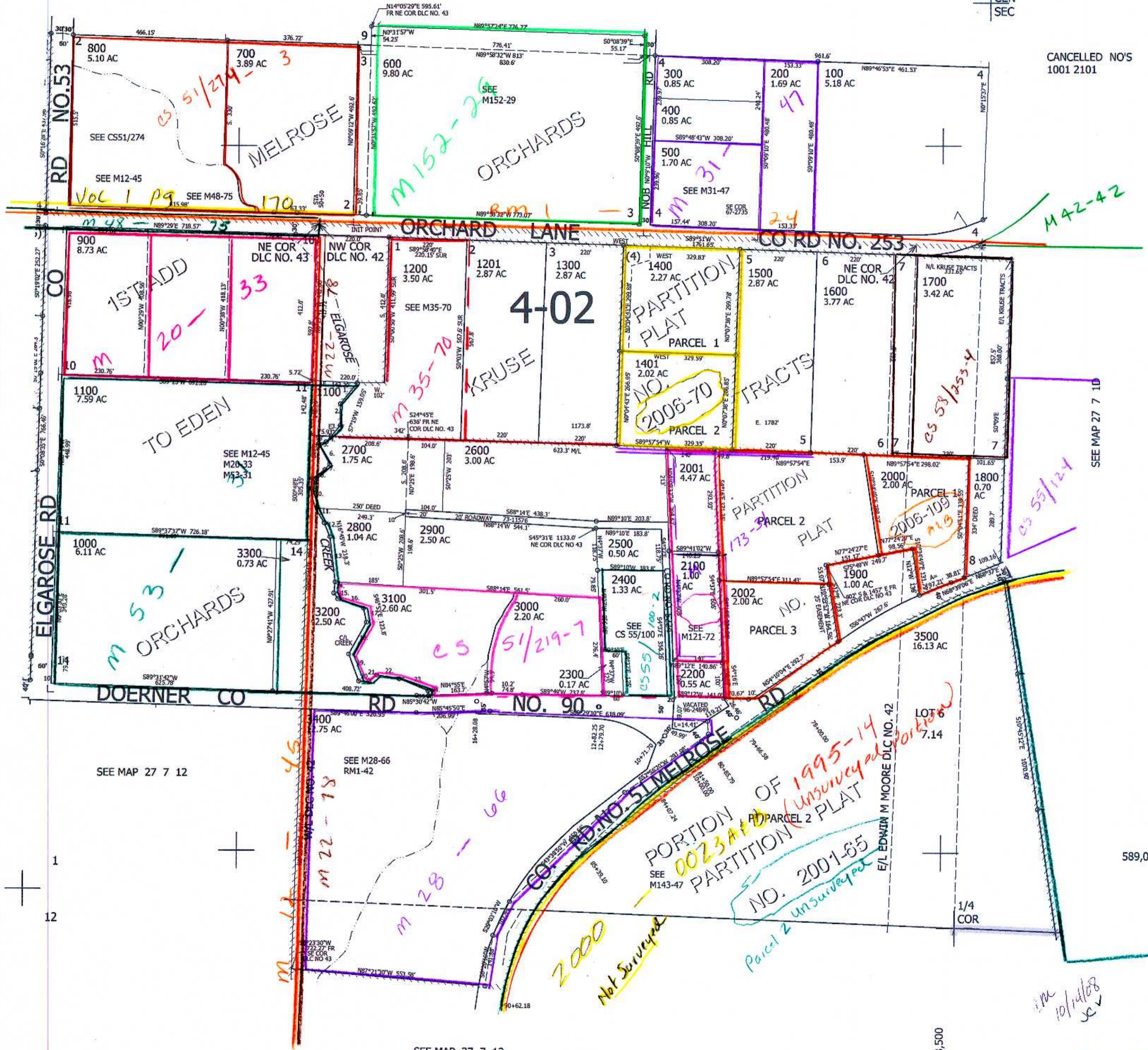
1" = 200'

1/4
COR

SEE MAP 27 7 1B

CEN
SEC

CANCELLED NO'S
1001 2101



C/L ELGAROSE CREEK

1. S36°55'45"W 78.78'
2. S3°52'E 55.2'
3. S35°34'W 37.07'
4. S35°34'W 31.03'
5. S75°31'W 17.8'
6. S30°34'E 61.1'
7. S38°58'W 21.9'
8. S49°01'W 45.5'
9. S13°53'W 26.6'
10. S20°14'E 56.9'
11. S31°51'E 52.7'
12. S19°06'E 40.6'
13. S10°43'E 125.6'
14. S9°12'W 35.8'
15. S34°15'E 19'
16. S72°08'E 81.8'
17. S12°58'E 38'
18. S26°35'W 106.1'
19. S22°31'E 81'
20. S89°53'E 28.4'
21. N48°33'E 28.5'
22. S85°33'E 63.3'
23. S68°46'E 90.4'
24. S12°06'15"E 11.18'

SEE MAP 27 7 1D

589,000

27 7 1C

2
11

1
12

4,128,500

SEE MAP 27 7 12