

SECTION 22 T.23S. R.4W. W.M.
DOUGLAS COUNTY

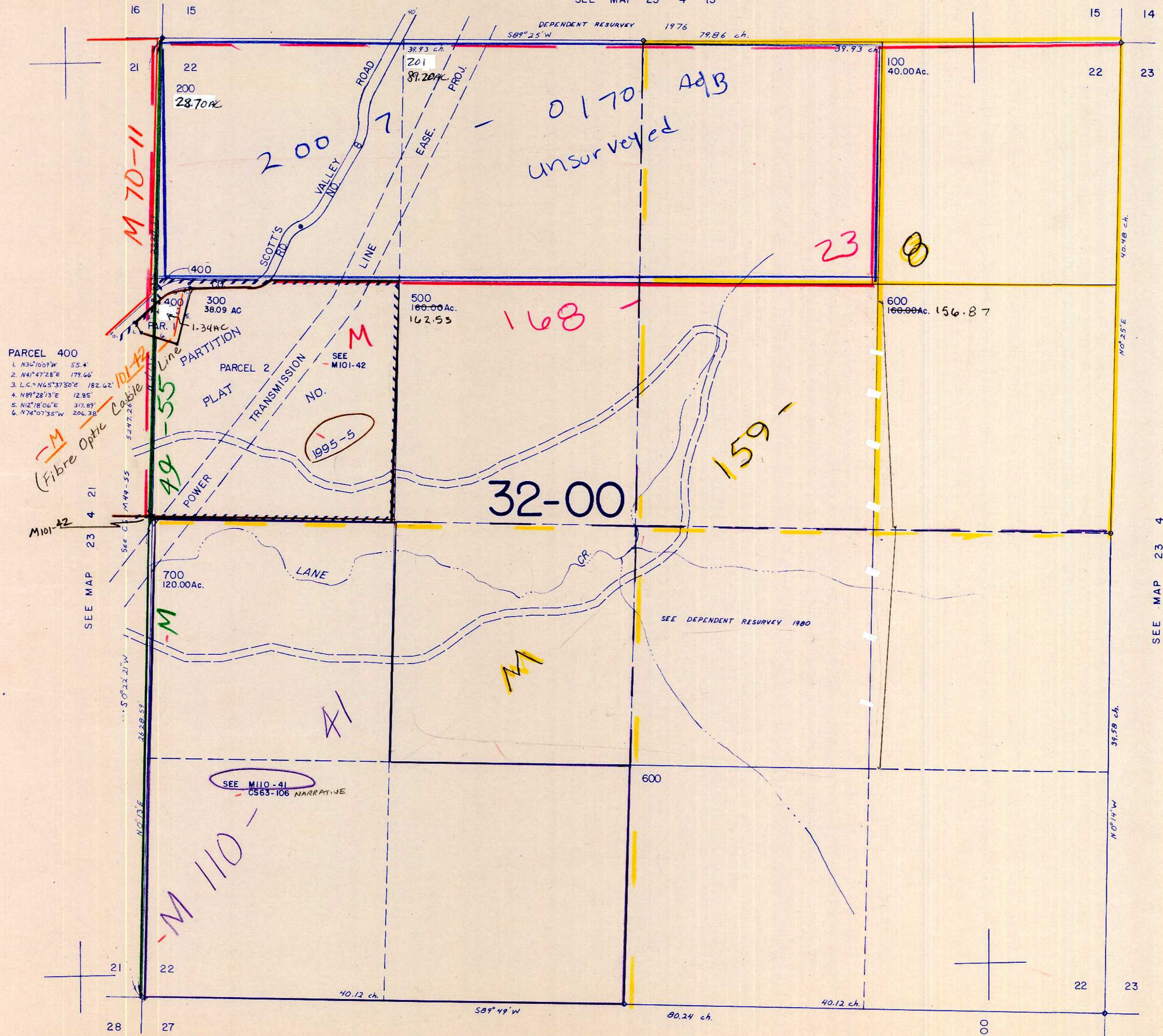
REVISED ON
1-31-95

23 4 22

THIS MAP WAS PREPARED FOR
ASSESSMENT PURPOSE ONLY.

1"=400'

SEE MAP 23 4 15



- PARCEL 400
1. N30°10'09"W 55.4'
 2. N4°47'28"E 179.66'
 3. L.C. = N65°37'50"E 182.62'
 4. N89°28'13"E 12.85'
 5. N12°18'06"E 317.89'
 6. N74°07'35"W 206.38'

CANCELLED NO'S
401
301

SEE MAP 23 4

SEE MAP 23 4

23 4 22

697,000

1,298,000

2/9/95
28