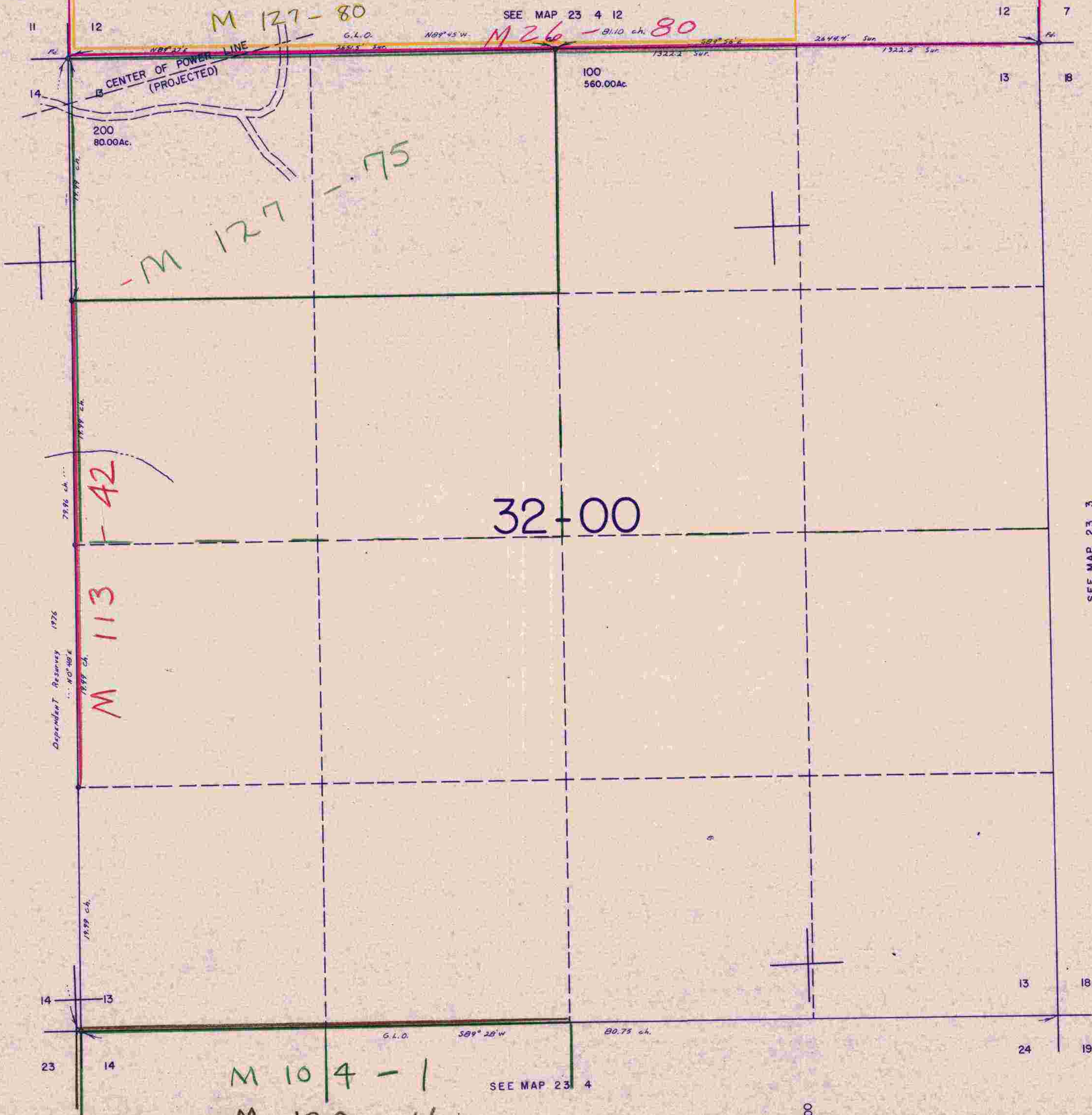


SECTION 13 T.23S. R.4W. W.M.  
DOUGLAS COUNTY

23 4 13

THIS MAP WAS PREPARED FOR  
ASSESSMENT PURPOSE ONLY.

1"=400'



SEE MAP 23 4 14

SEE MAP 23 3

SEE MAP 23 4

1,308,000

23 4 13

8/1/78