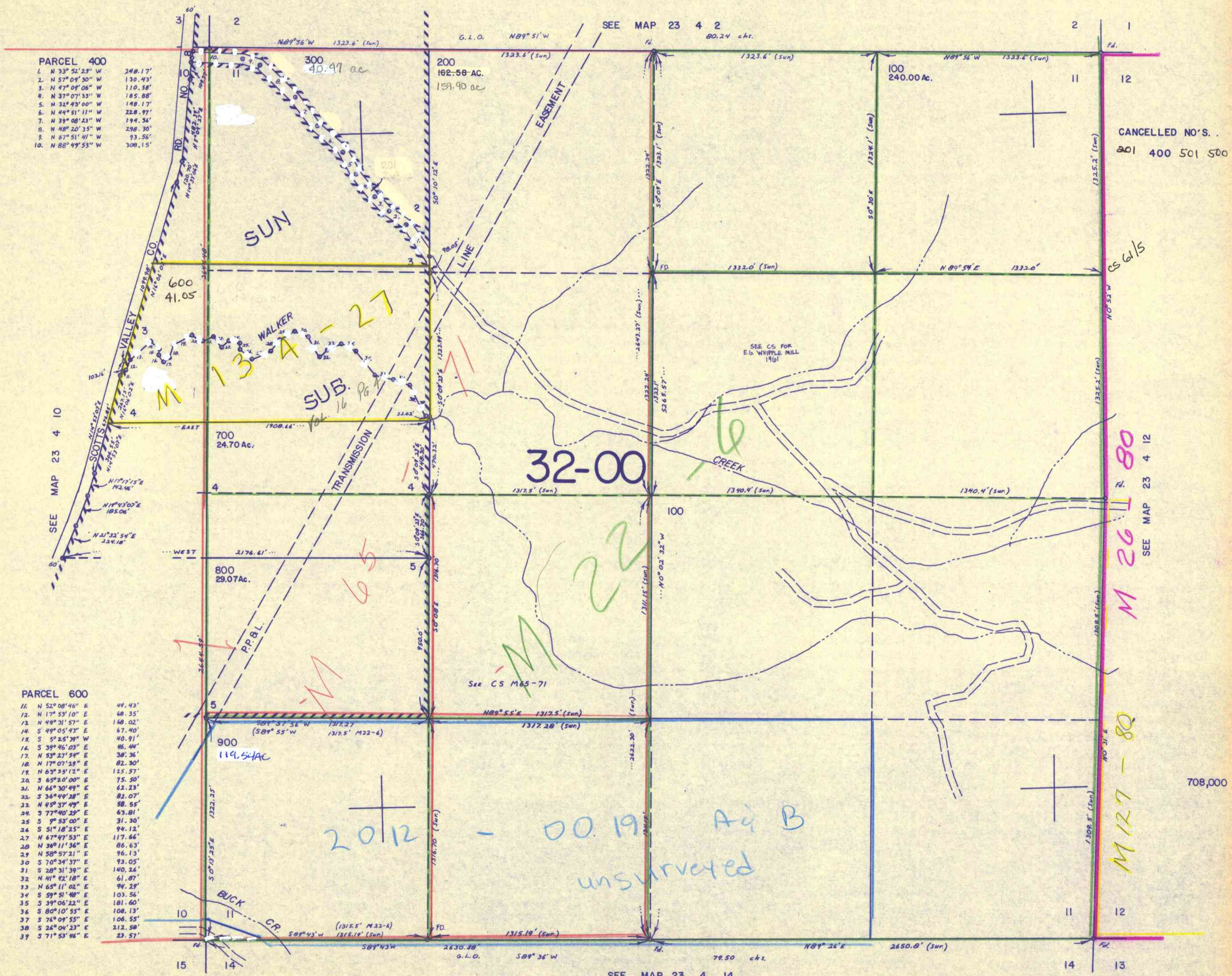


SECTION 11 T.23S. R.4W. W.M.  
DOUGLAS COUNTY

THIS MAP WAS PREPARED FOR  
ASSESSMENT PURPOSE ONLY.

1"=400'



PARCEL 400

1. N 33° 52' 23" W	248.17'
2. N 57° 09' 30" W	130.43'
3. N 47° 09' 08" W	110.58'
4. N 37° 07' 33" W	185.88'
5. N 32° 43' 00" W	148.17'
6. N 44° 51' 11" W	228.97'
7. N 39° 08' 23" W	194.36'
8. N 48° 20' 35" W	298.30'
9. N 67° 51' 41" W	73.56'
10. N 88° 49' 53" W	308.15'

PARCEL 600

11. N 52° 08' 46" E	44.43'
12. N 17° 53' 10" E	68.35'
13. N 49° 31' 57" E	168.02'
14. S 49° 05' 43" E	67.40'
15. S 5° 25' 38" W	40.91'
16. S 39° 46' 03" E	46.44'
17. N 53° 27' 54" E	38.36'
18. N 17° 07' 29" E	82.30'
19. N 63° 35' 12" E	125.57'
20. S 65° 20' 00" E	75.50'
21. N 66° 30' 49" E	62.23'
22. S 36° 44' 28" E	82.07'
23. N 45° 37' 49" E	58.55'
24. S 77° 40' 29" E	63.81'
25. S 9° 53' 00" E	31.30'
26. S 51° 18' 25" E	94.12'
27. N 67° 47' 53" E	117.66'
28. N 36° 11' 36" E	86.63'
29. N 58° 57' 21" E	96.13'
30. S 70° 34' 37" E	93.05'
31. S 28° 31' 39" E	140.26'
32. N 41° 42' 18" E	61.67'
33. N 65° 11' 02" E	94.29'
34. S 59° 51' 40" E	103.56'
35. S 39° 06' 22" E	181.60'
36. S 80° 10' 55" E	108.13'
37. S 76° 09' 55" E	106.55'
38. S 26° 04' 23" E	212.58'
39. S 71° 53' 46" E	23.57'

CANCELLED NO'S.  
301 400 501 500

M 26-80  
SEE MAP 23 4 12

M 127-80

708,000

SEE MAP 23 4 14

1,304,000

8/13/18