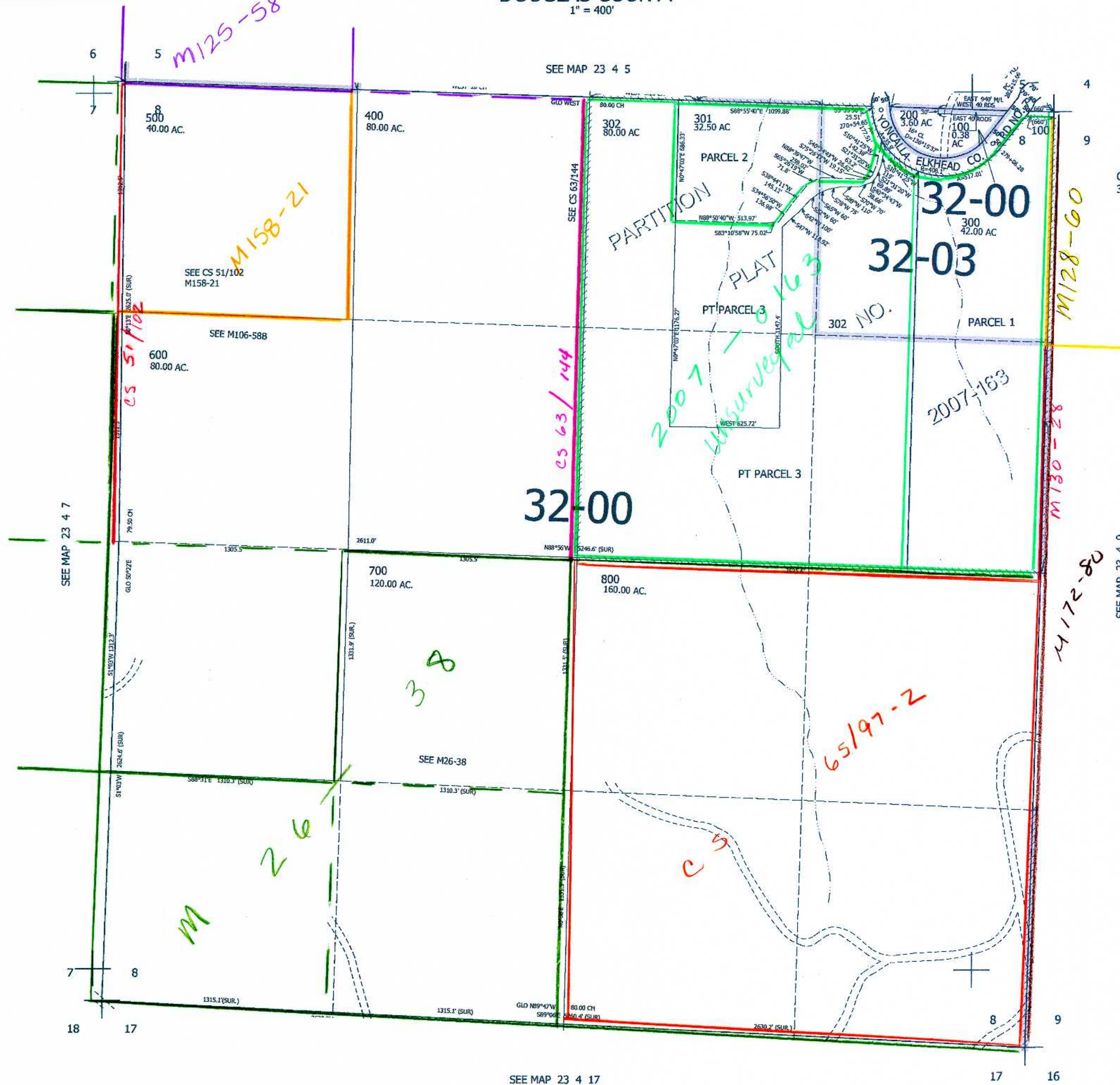


THIS MAP WAS PREPARED FOR ASSESSMENT PURPOSE ONLY.

SEC.8 T.23S. R.4W. W.M.  
DOUGLAS COUNTY  
1" = 400'

REVISED ON  
12-7-12

23 4 8



CANCELLED NOS  
303

SEE MAP 23 4 9

708,000

SEE MAP 23 4 17

4,209,000

23 4 8  
CW  
12-31/07  
JP