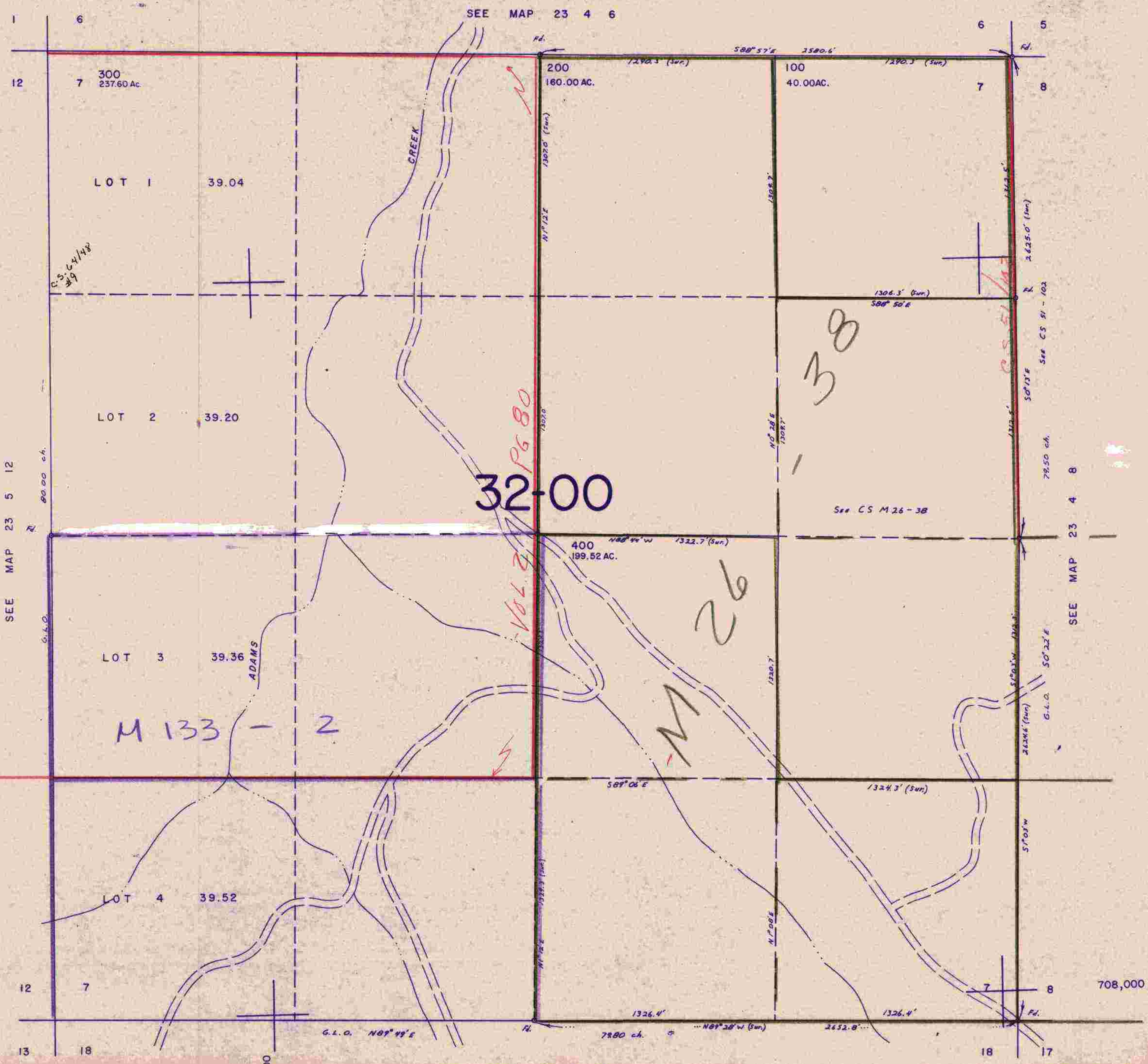


SECTION 7 T.23S. R. 4 W. W.M.  
DOUGLAS COUNTY

1" = 400'

THIS MAP WAS PREPARED FOR  
ASSESSMENT PURPOSE ONLY.



SEE MAP 23 5 12  
SEE MAP 23 4 6  
SEE MAP 23 4 18

SEE MAP 23 4 8  
SEE MAP 23 4 7

708,000

1,279,000

8/10/76