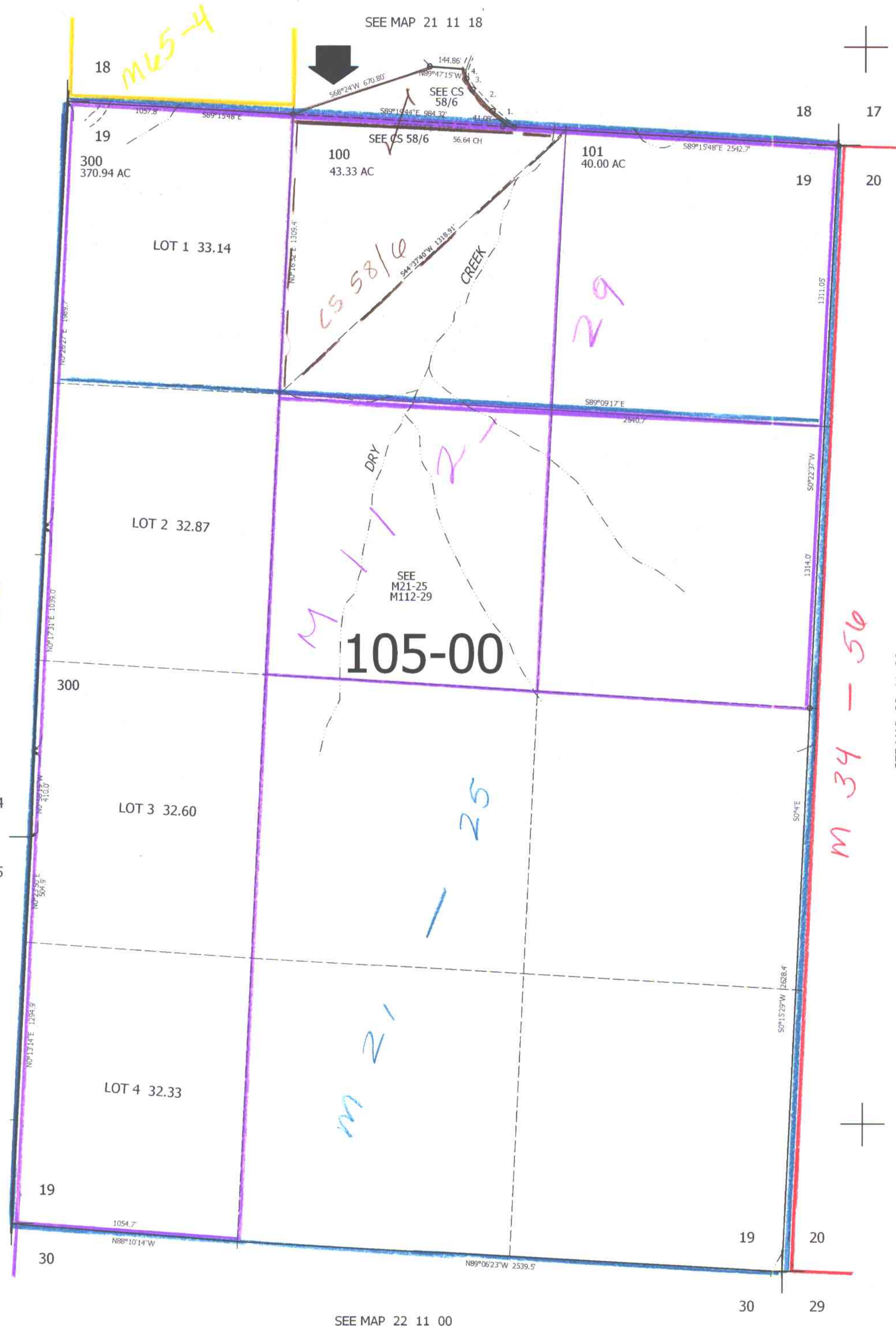


THIS MAP WAS PREPARED FOR ASSESSMENT PURPOSE ONLY.

SEC.19 T.22S. R.11W. W.M.  
DOUGLAS COUNTY  
1" = 400'

REVISED ON  
7-6-12

22 11 19



CANCELLED NOS  
200

- PARCEL 100
1. N53°02'45"W 119.49'
  2. N46°00'15"W 138.94'
  3. N33°31'W 56.46'
  4. N10°04'30"W 43.60'

SEE MAP 22 12 00

M 44-33

105-00

M 21-25

M 21

M 34-56

SEE MAP 22 11 20

738,000

SEE MAP 22 11 00

3,982,000

OM  
7/24/12  
XV

22 11 19