

THIS MAP WAS PREPARED FOR ASSESSMENT PURPOSE ONLY.

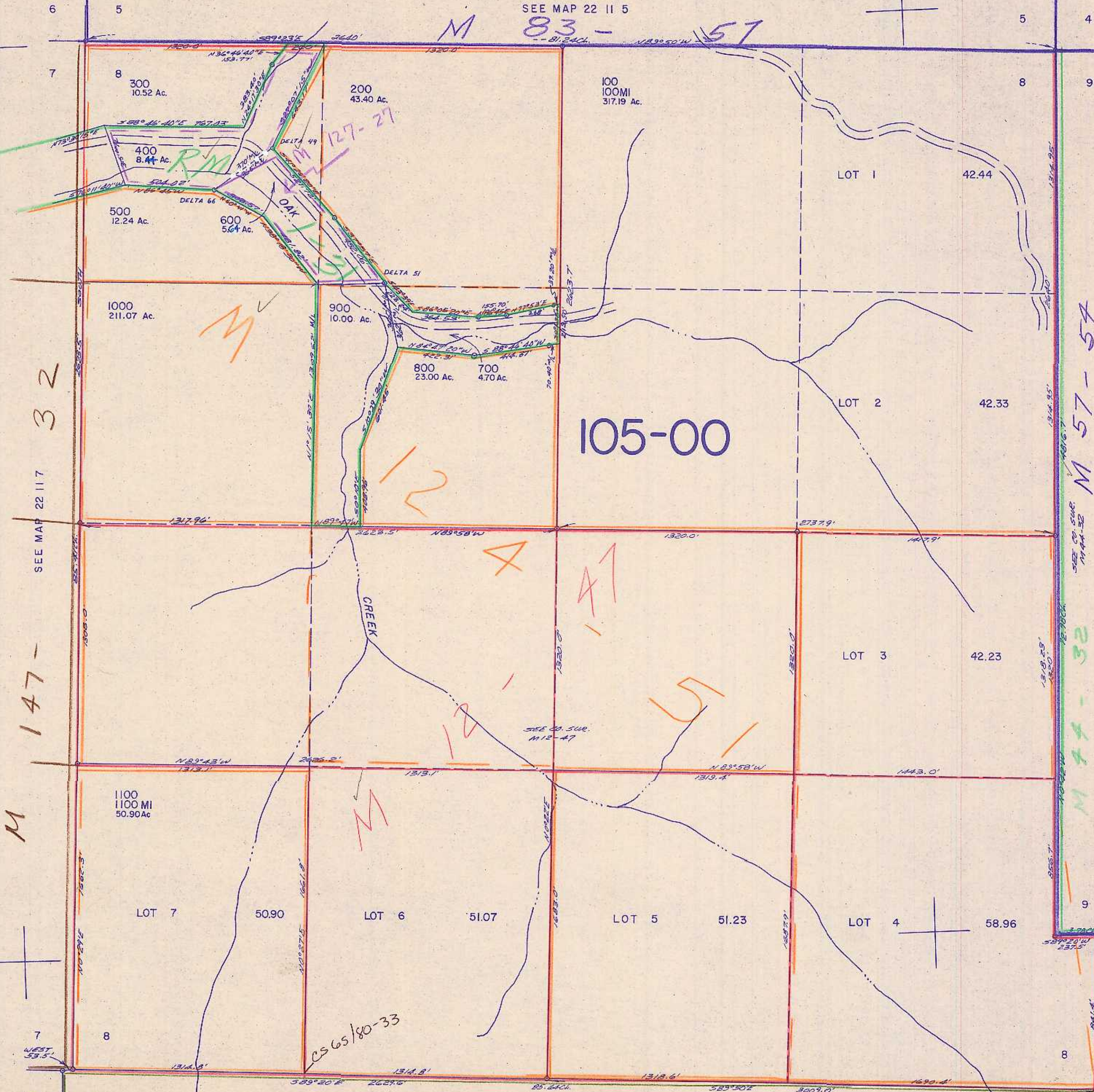
SECTION 8 T.22S. R.11W. W.M.
DOUGLAS COUNTY

22 11 8

1" = 400'

SEE MAP 22 11 5

M 83 - 57



32

147-

M

105-00

M 57-54

M 74-32

M 169-4

M 175-62

SEE MAP 22 11 7

M 51 - 28

22 11 8

3/03 JF