

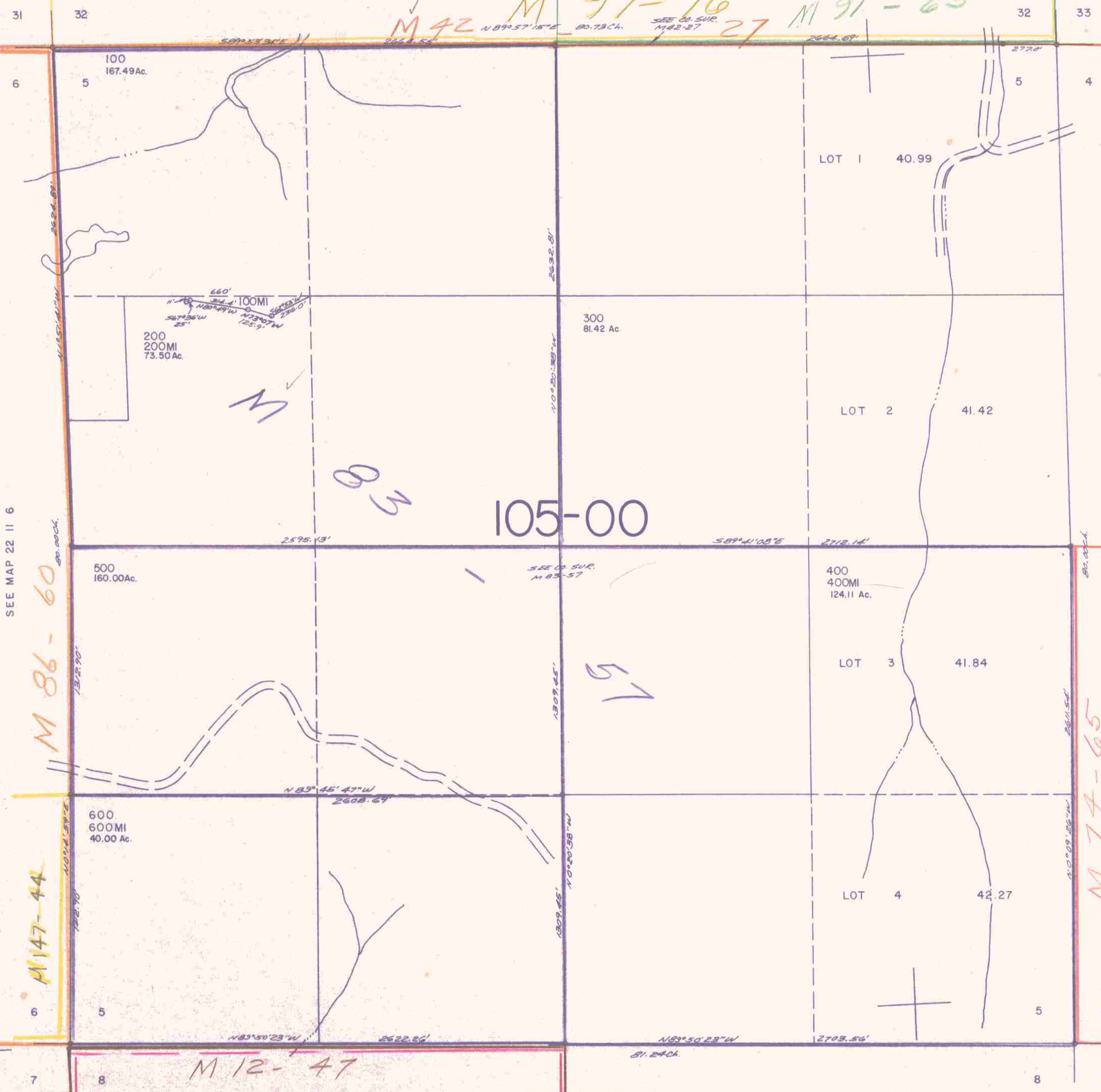
SECTION 5 T.22S. R.11W. W.M.
DOUGLAS COUNTY

THIS MAP WAS PREPARED FOR
ASSESSMENT PURPOSE ONLY.

1" = 400

SEE MAP 21 11 32

M 42 M 97-16 27 M 91-63



SEE MAP 22 11 6

M 86-60

M 147-44

105-00

SEE MAP 22 11 4

M 74-65

SEE MAP 22 11 8

M 12-47
M 124-51

758,000

1,063,000

3/8/97