

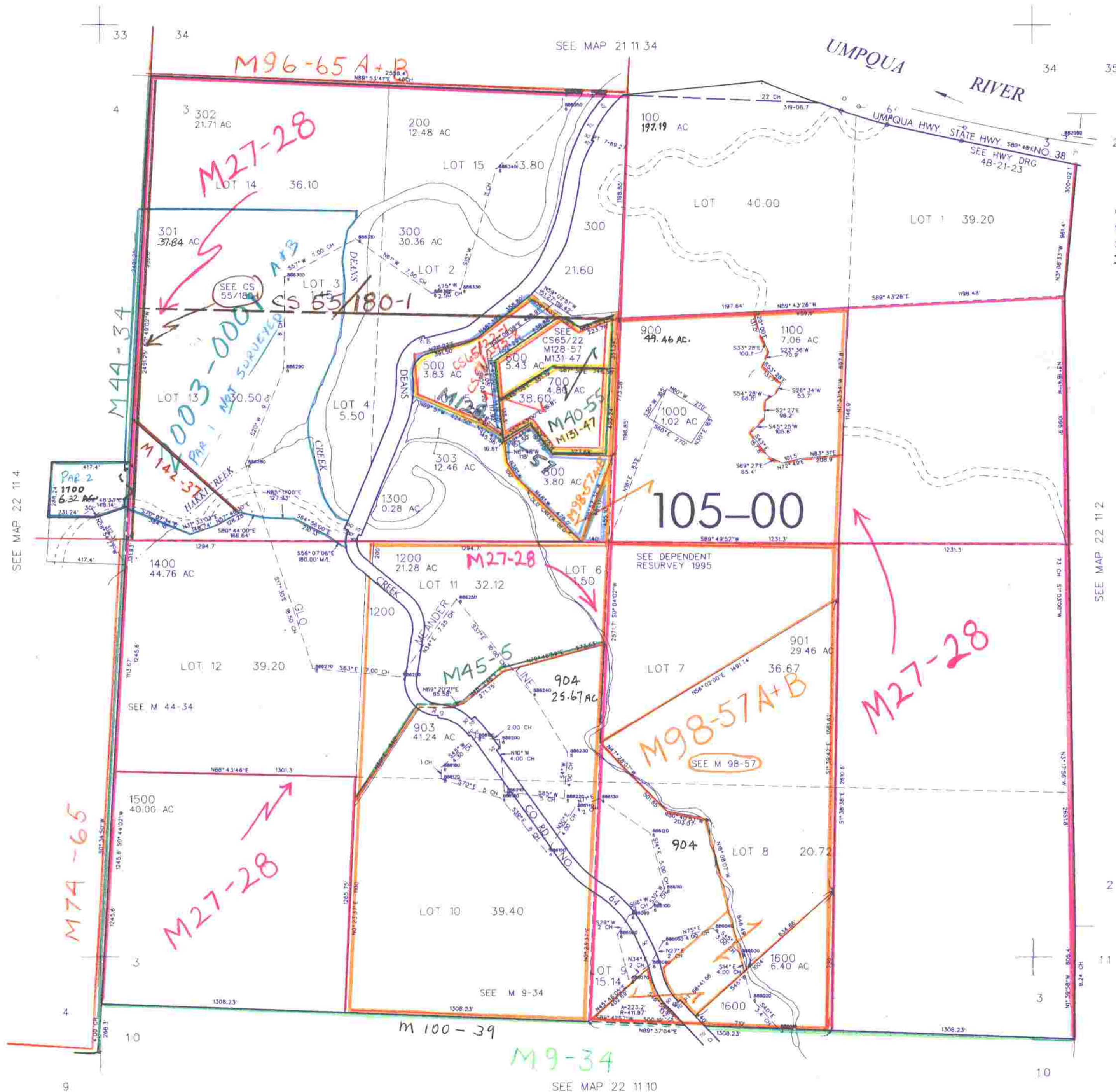
THIS MAP WAS PREPARED FOR
ASSESSMENT PURPOSE ONLY

SEC. 3 T.22S. R.11W W.M.
DOUGLAS COUNTY

22 11 3

1" = 400'

REVISED ON
12-6-99
7-8-03



CANCELED NO'S

902	801	304
305	501	502
306	400	307

753,000

3,998,000

22 11 3

11/27/04