

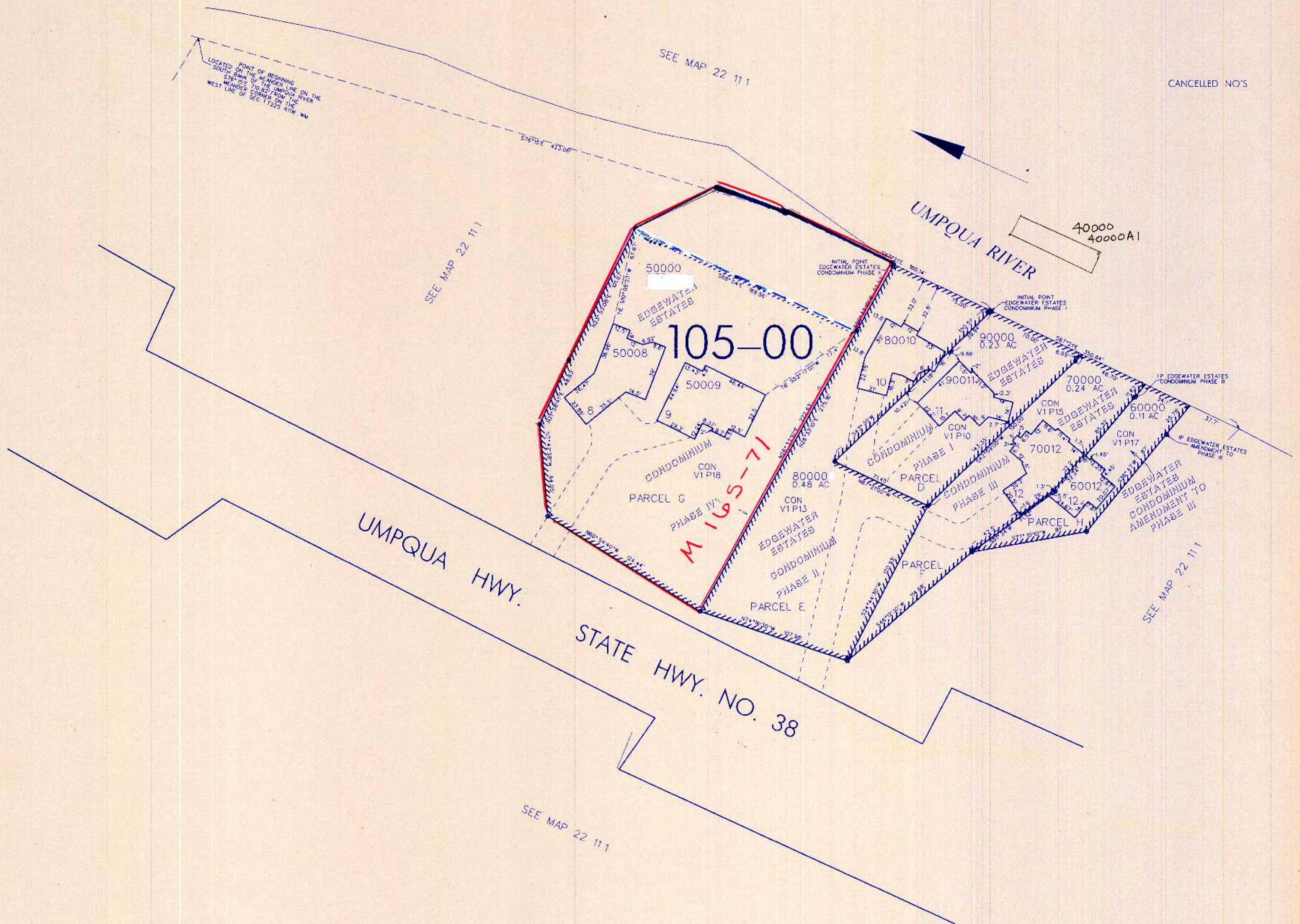
THIS MAP WAS PREPARED FOR
ASSESSMENT PURPOSE ONLY

NW¼ SEC.1 T.22S. R.11W. W.M.
DOUGLAS COUNTY

REVISED ON
11/21/00

22 11 1
SUPPLEMENTAL

1"=50'



CANCELLED NO'S

22 11 1
SUPPLEMENTAL

11/29/2000