

THIS MAP WAS PREPARED FOR ASSESSMENT PURPOSE ONLY.

# T.22S. R.11W. W.M. DOUGLAS COUNTY

REVISED ON 4-18-08

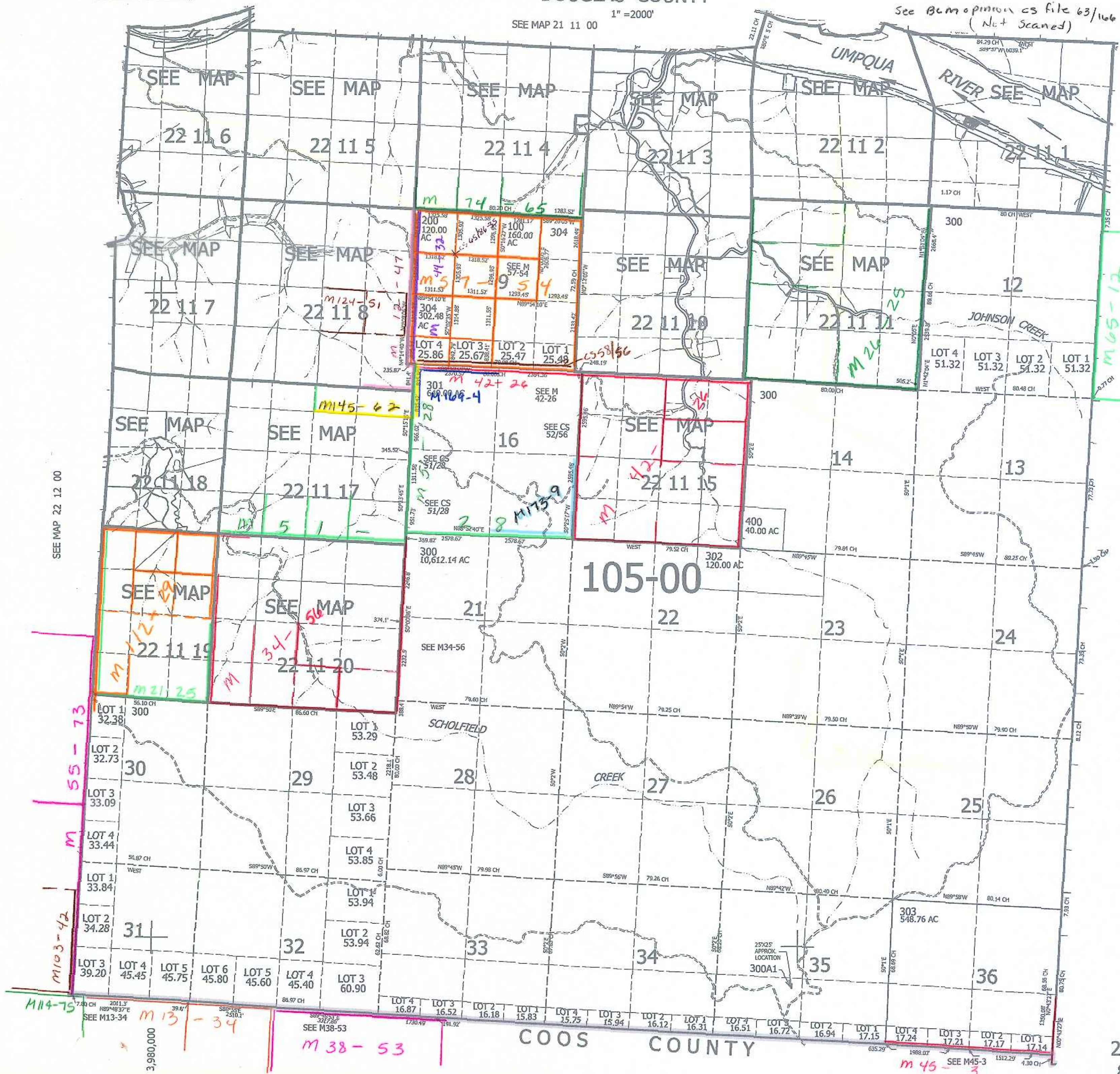
22 11 00 & INDEX

SEE MAP 21 11 00

1" = 2000'

See BLM opinion cs file 63/106 (Not Scanned)

CANCELLED NOS 100M1



SEE MAP 22 10 00

730,000

22 11 00 & INDEX