

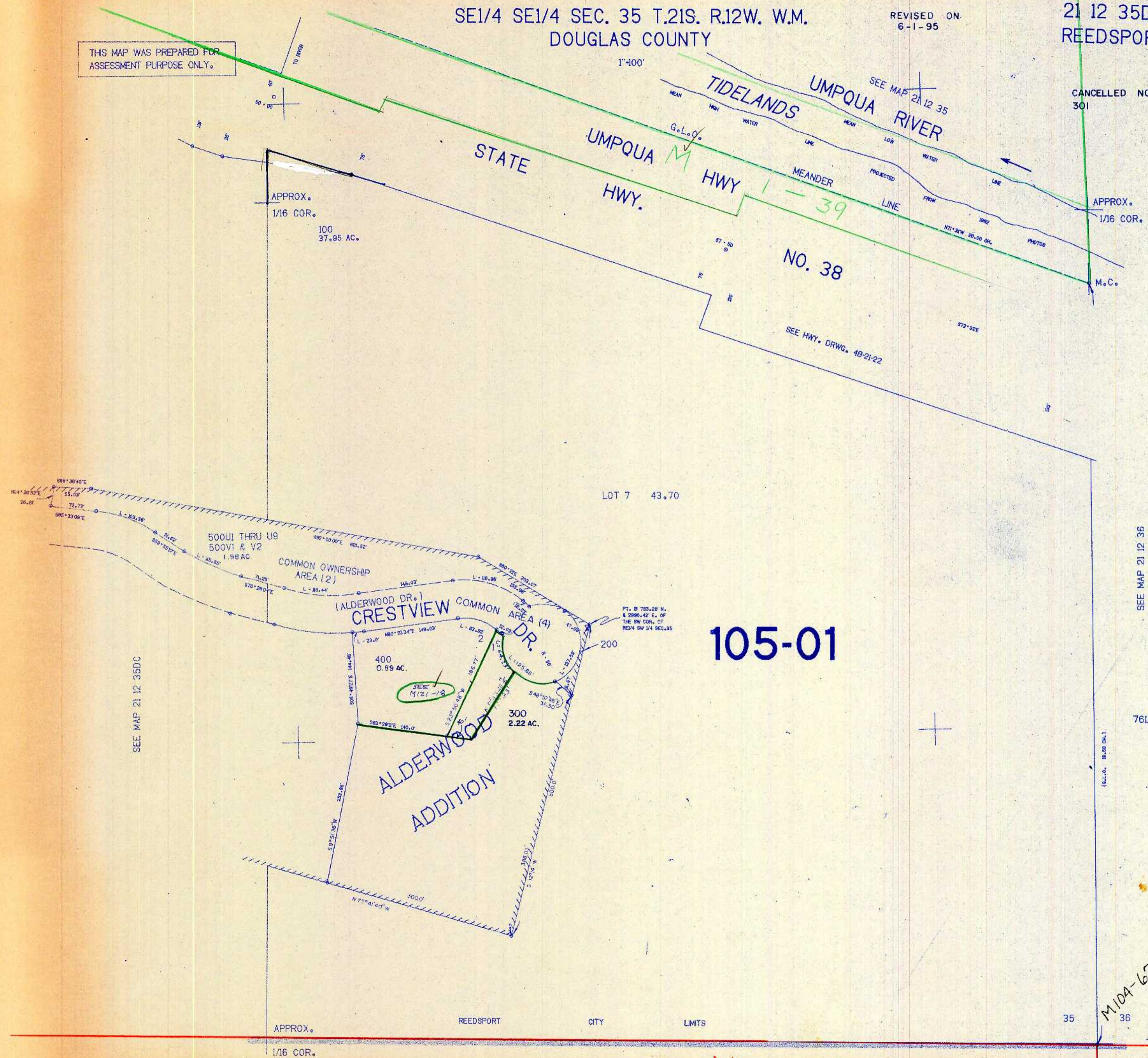
SE1/4 SE1/4 SEC. 35 T.21S. R.12W. W.M.  
DOUGLAS COUNTY

REVISED ON  
6-1-95

21 12 35DD  
REEDSPORT

THIS MAP WAS PREPARED FOR  
ASSESSMENT PURPOSE ONLY.

CANCELLED NO.S  
301



105-01

SEE MAP 21 12 36

761.000

M 104-67

SEE MAP 22 12 2 M 42-27

1.052.500

21 12 35DD  
REEDSPORT