

THIS MAP WAS PREPARED FOR ASSESSMENT PURPOSE ONLY.

NW1/4 SW1/4 SEC.35 T.21S. R.12W. W.M.
DOUGLAS COUNTY

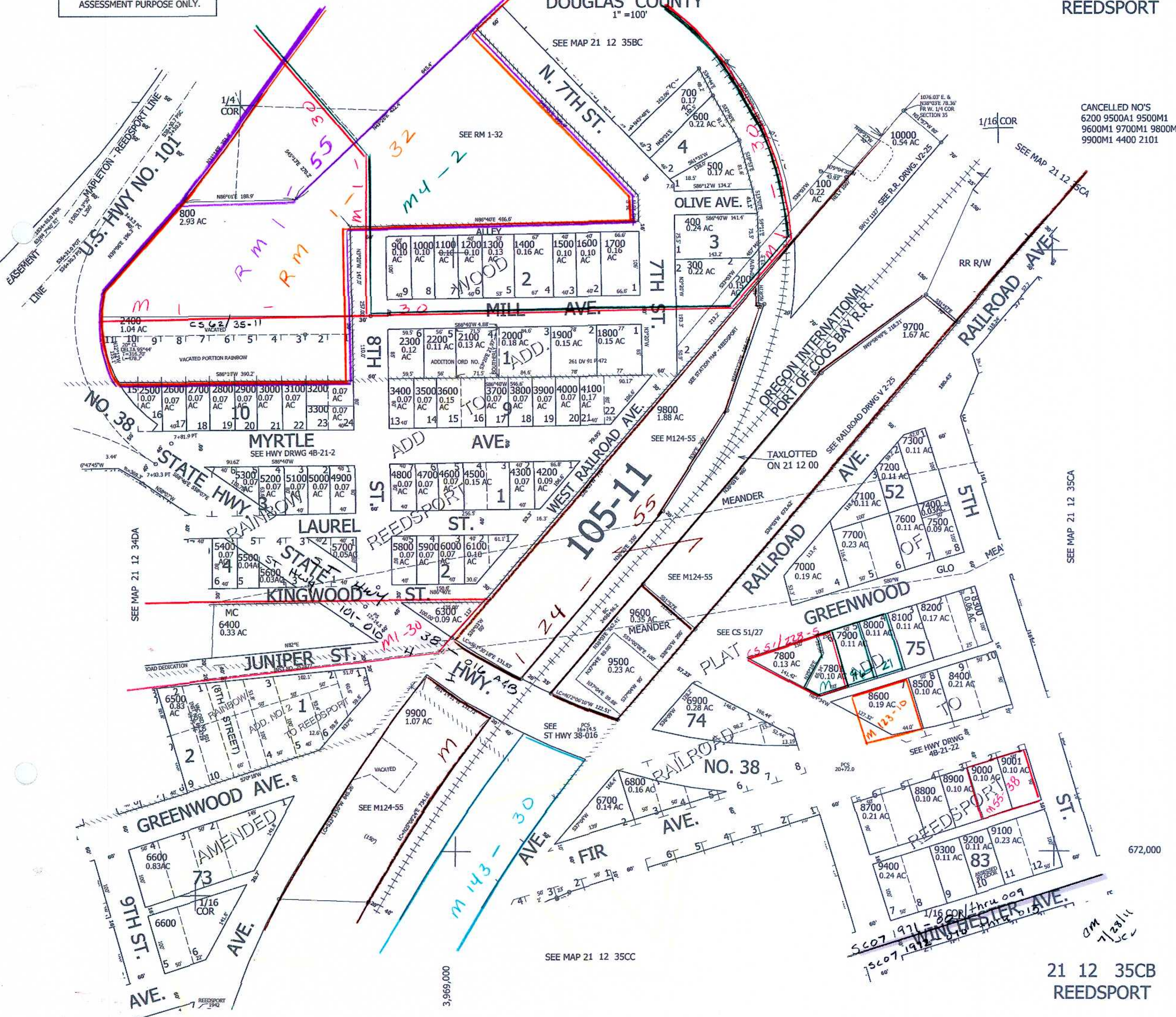
REVISED ON
3-27-13

21 12 35CB
REEDSPORT

1" = 100'

SEE MAP 21 12 35BC

CANCELLED NO'S
6200 9500A1 9500M1
9600M1 9700M1 9800M1
9900M1 4400 2101



SEE MAP 21 12 34DA

SEE MAP 21 12 35CA

SEE MAP 21 12 35CC

21 12 35CB
REEDSPORT

AM
7/28/14

672,000

3,969,000