

THIS MAP WAS PREPARED FOR ASSESSMENT PURPOSE ONLY

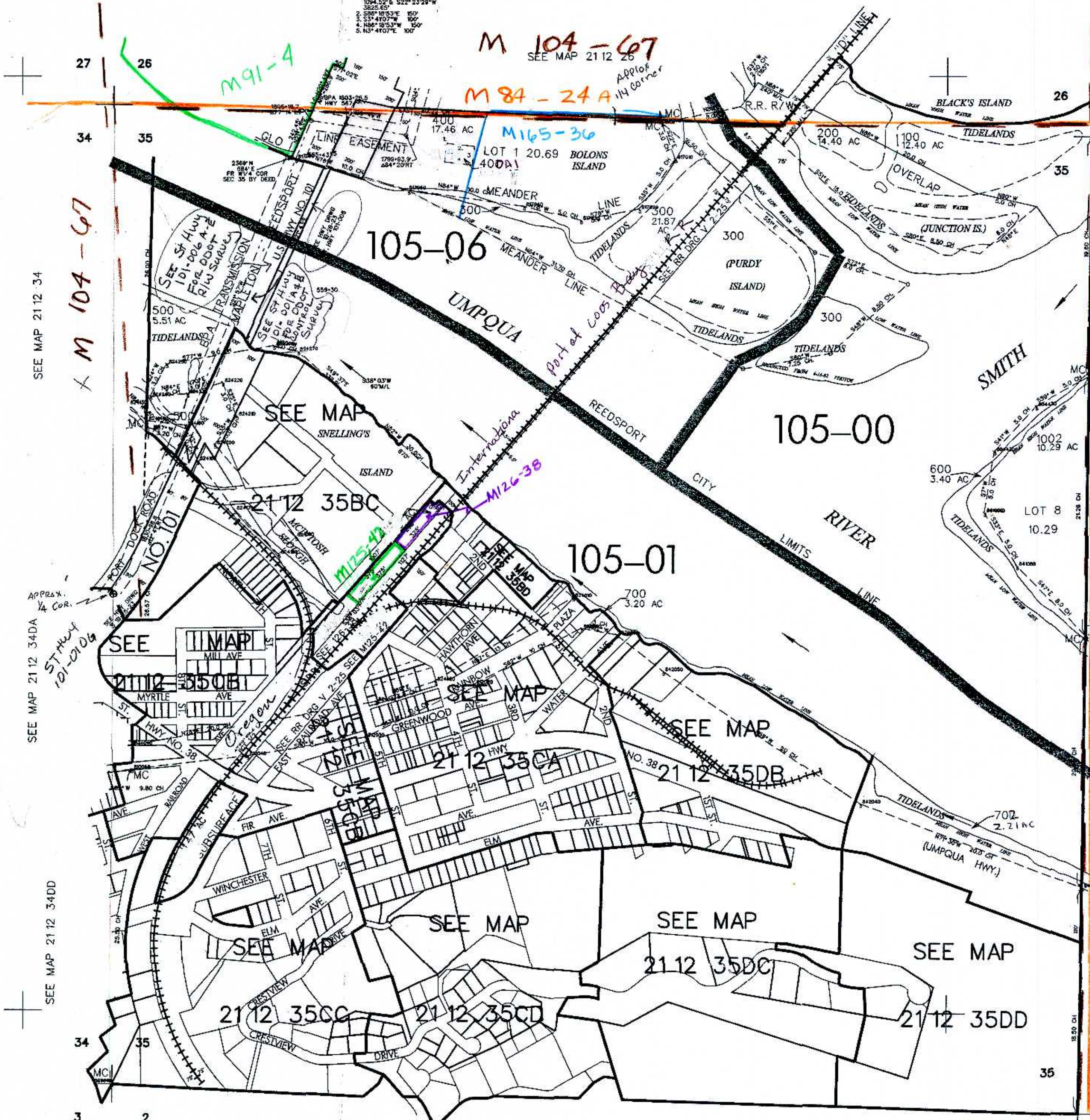
SEC. 35 T.21S. R.12W W.M. DOUGLAS COUNTY

REVISED ON 4-12-02

21 12 35 & INDEX REEDSPORT

PARCEL 401
1. W. 1/4 COR SEC. 35 BEARS N4°05'17"W 1094.52' S 52°23'29"W 3625.65'
2. S89°18'53"E 150'
3. S3°41'07"W 150'
4. N86°18'53"W 150'
5. N3°41'07"E 100'

1"=400'



CANCELLED NO'S
800A2 802 802A1
802M1 803M1 801M1
800M1 1001M1 800 801
803 900A1
401 1000 1001

M 79-30
SEE MAP 21 12 36
M 104-67

M 84-24A

M 104-67
SEE MAP 21 12 34

SEE MAP 21 12 34DA
ST HWY 101-0106
APPROX. 1/4 COR.

SEE MAP 21 12 34DD

SEE MAP 22 12 2

SEE MAP 22 12 2BA

SEE MAP 22 12 2

21 12 35 & INDEX REEDSPORT
NW
04/02

761,000

3,973,000