

THIS MAP WAS PREPARED FOR ASSESSMENT PURPOSE ONLY.

SW1/4 SE1/4 SEC.34 T.21S. R.12W. W.M.
DOUGLAS COUNTY
1" = 100'

REVISED ON
1-25-17

21 12 34DC
REEDSPORT

SEE MAP 21 12 34DB

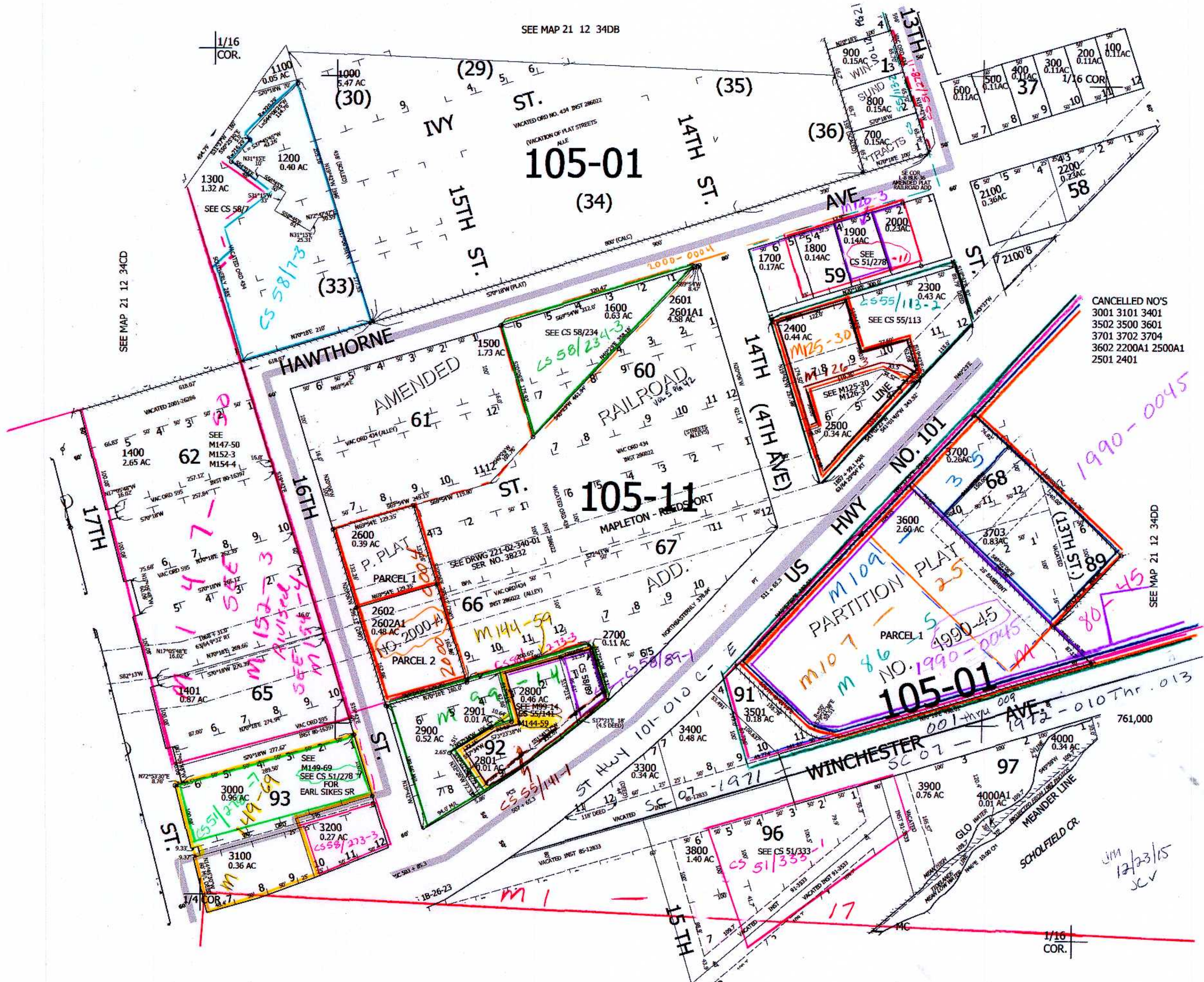
SEE MAP 21 12 34CD

SEE MAP 21 12 34DD

SEE MAP 22 12 3AB

3,967,000

21 12 34DC
REEDSPORT



- CANCELLED NO'S
- 3001 3101 3401
- 3502 3500 3601
- 3701 3702 3704
- 3602 2200A1 2500A1
- 2501 2401

1990-0045

12/23/15
JC