

NW1/4 SE1/4 SEC. 34 T.21S. R.12W. W.M.
DOUGLAS COUNTY

21 12 34DB
REEDSPORT

THIS MAP WAS PREPARED FOR
ASSESSMENT PURPOSE ONLY.

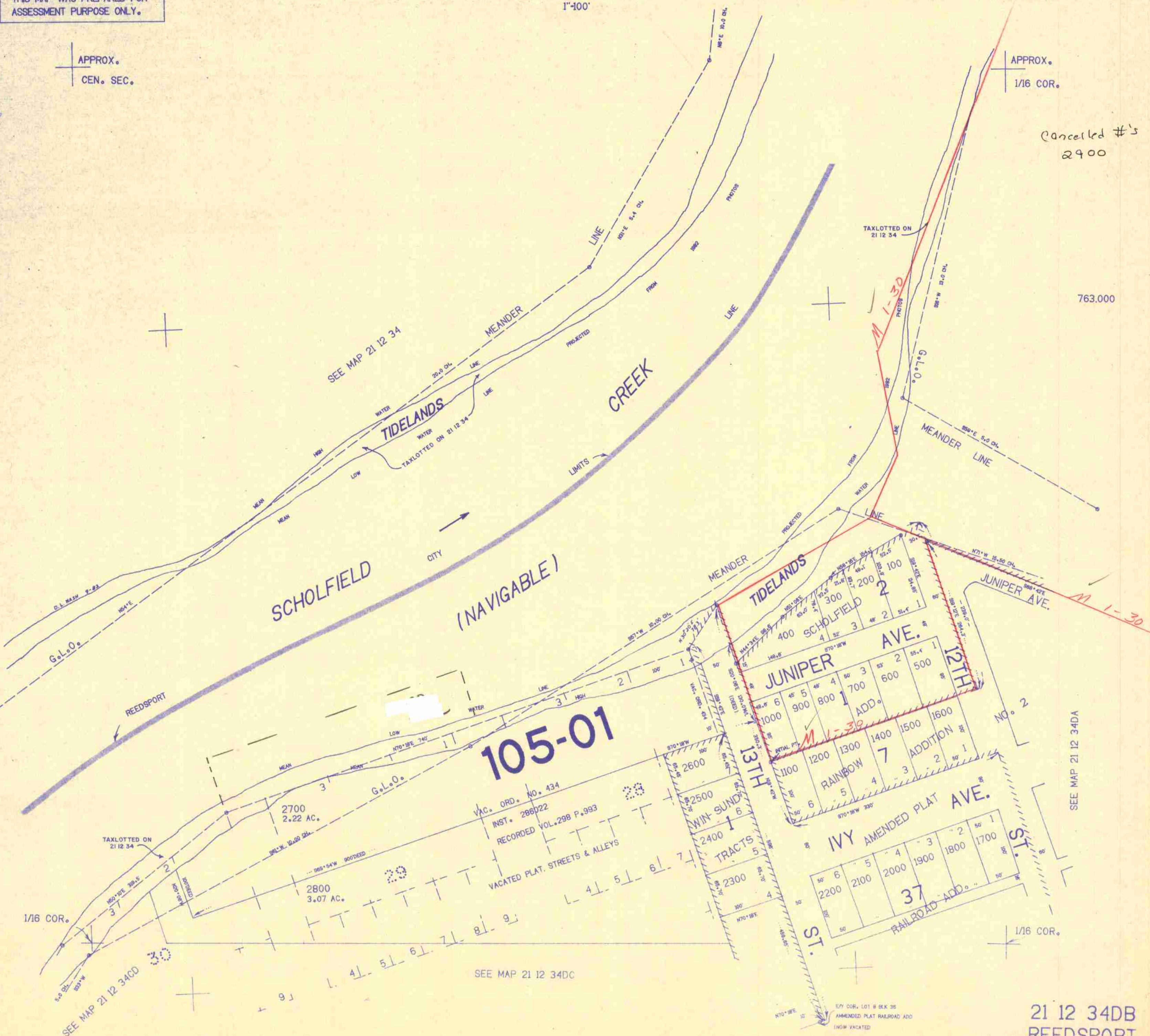
1"=100'

APPROX.
CEN. SEC.

APPROX.
1/16 COR.

Cancelled #'s
2900

763.000



105-01

VAC. ORD. NO. 434
INST. 286022
RECORDED VOL. 298 P. 993
VACATED PLAT. STREETS & ALLEYS

21 12 34DB
REEDSPORT

3/83 BS