

SW1/4 NE1/4 SEC. 33 T.21S. R.12W. W.M.
DOUGLAS COUNTY

REVISED ON
1-15-92

21 12 33AC
REEDSPORT

THIS MAP WAS PREPARED FOR
ASSESSMENT PURPOSE ONLY.

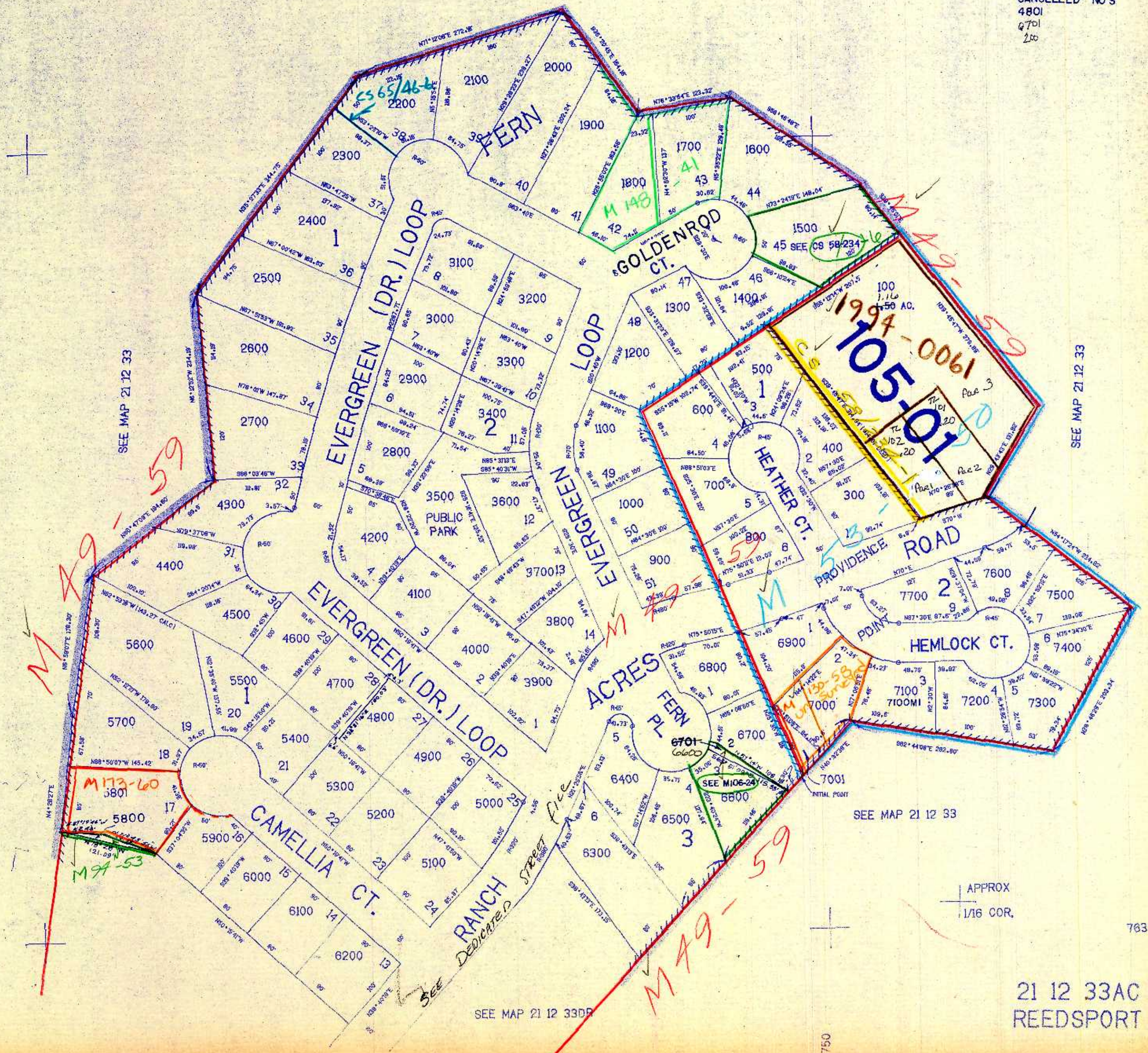
1"=100'

APPROX
1/16 COR.

APPROX
1/16 COR.

SEE MAP 21 12 33

CANCELLED NO'S
4801
4701
200



APPROX
CEN. SEC.

APPROX
1/16 COR.

SEE MAP 21 12 33DR

21 12 33AC
REEDSPORT

763.500

1040.750

1192
8 24