

SW1/4 NE1/4 SEC. 33 T.21S. R.12W. W.M.
DOUGLAS COUNTY

REVISED ON
1-15-92

21 12 33AC
REEDSPORT

THIS MAP WAS PREPARED FOR
ASSESSMENT PURPOSE ONLY.

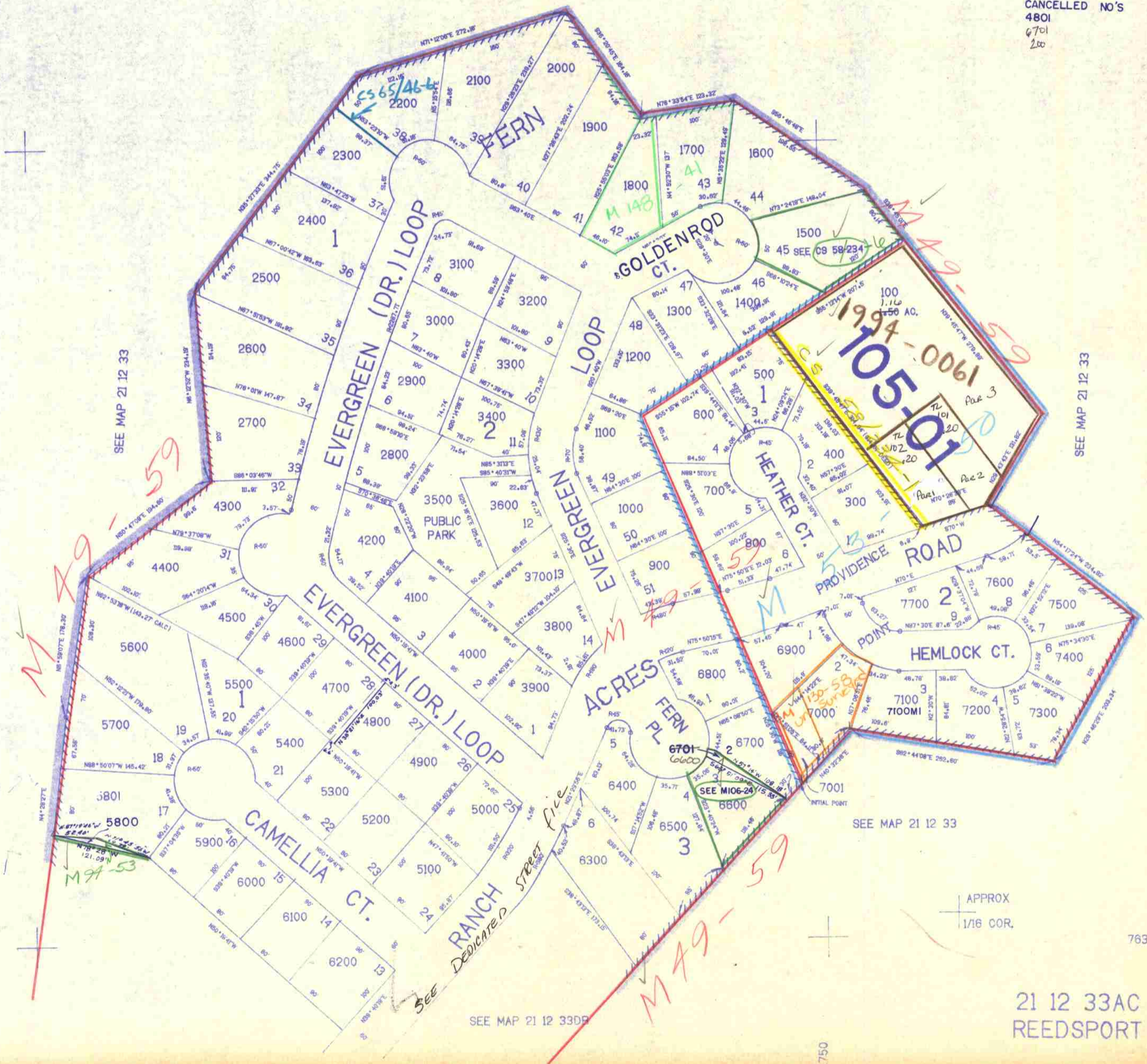
1"=400'

APPROX
1/16 COR.

APPROX
1/16 COR.

SEE MAP 21 12 33

CANCELLED NO'S
4801
6701
200



SEE MAP 21 12 33

SEE MAP 21 12 33

SEE MAP 21 12 33

SEE MAP 21 12 3309

APPROX
CEN. SEC.

APPROX
1/16 COR.

763,500

21 12 33AC
REEDSPORT

1040.750

1192
8 21