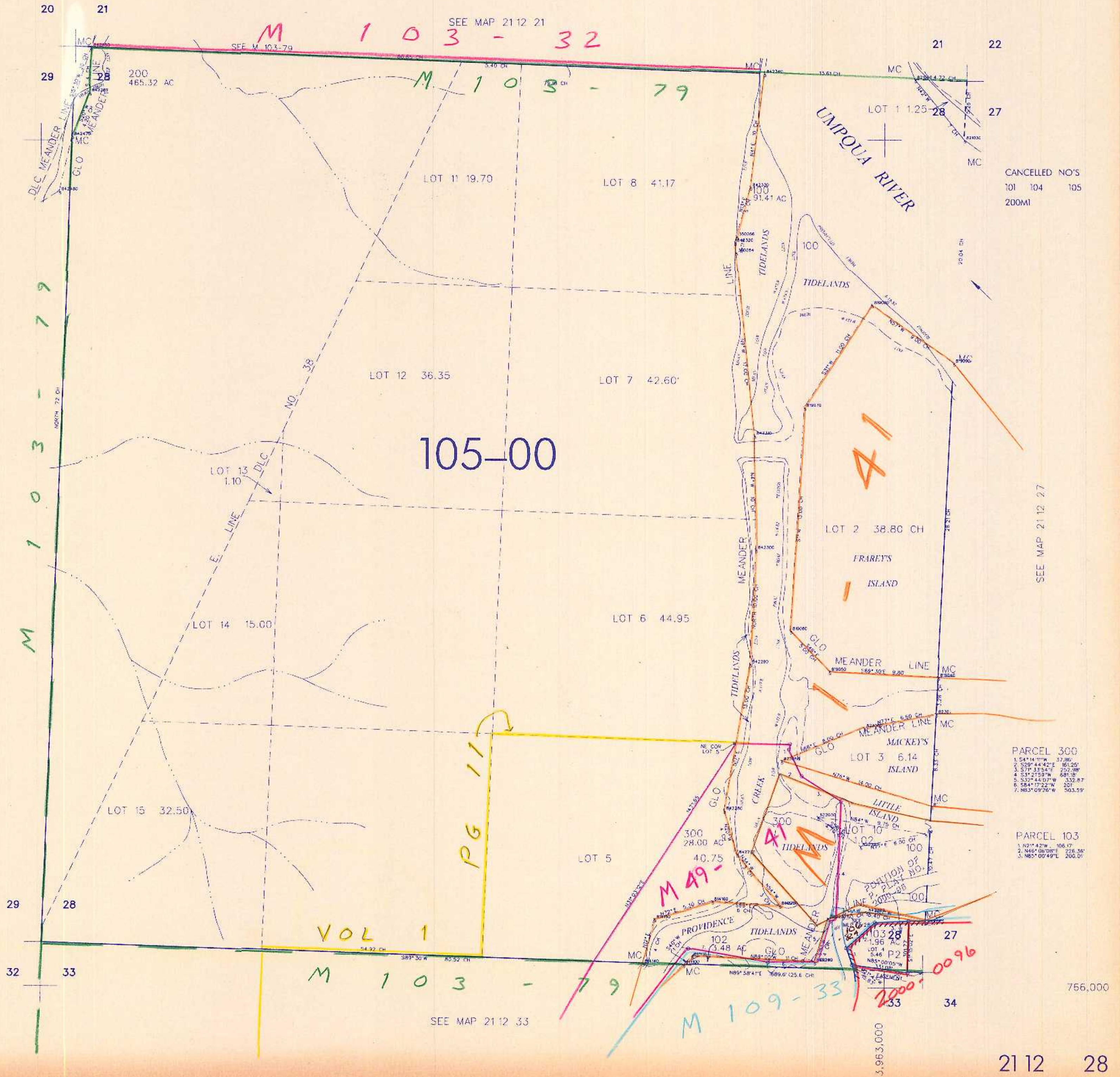


1" = 400'



CANCELLED NO'S  
101 104 105  
200MI

PARCEL 300

1. 54°14'11"W	57.86'
2. 33°04'42"E	161.25'
3. 57°11'54"E	252.88'
4. 53°21'53"W	681.3'
5. 53°44'07"W	332.87'
6. 58°17'22"W	201'
7. N83°09'26"W	303.59'

PARCEL 103

1. N21°42'W	106.17'
2. N46°06'08"E	226.30'
3. N65°00'49"E	200.00'

756,000